

# Police Services Evaluation for Returning Students

Summer 2007



MIAMI UNIVERSITY POLICE DEPARTMENT  
4945 OXFORD TRENTON ROAD  
OXFORD, OHIO 45056  
(513) 529-2222  
[WWW.MUOHIO.EDU/POLICE/](http://WWW.MUOHIO.EDU/POLICE/)



August 25, 2007

Chief John M. McCandless  
Miami University Police Department  
4945 Oxford Trenton Road  
Oxford, Ohio 45056

Chief McCandless:

The attached report is the third annual evaluation of the community's overall feeling of safety on campus and attitudes toward the police department. Combined with the information collected from our first efforts over the last two years, we are able to validate the community's concerns about different safety-related topics, observe changes in attitudes about campus safety and the police department, and further streamlining future evaluation projects.

This report is a summary of the results from the Police Services Evaluation for Returning Students which was conducted from July 2 to July 22, 2007. Based on the responses that were submitted, I believe that a representative sample of the undergraduate population provided input in this project. As you read over the summary of the responses, you will find that most students who responded (95%) feel that Miami University is a safe campus and that most students (96%) rate their overall experience with the Miami University Police as "good," "very good," or "excellent." While these are encouraging statistics, they should be considered in the context of the many comments that respondents provided about campus safety issues and police services.

I believe that this survey validates the hard work that many of the officers have invested in our community over the past several years. Hopefully the results of the evaluation and the comments that were submitted will continue to offer insight into the needs of our community.

Respectfully submitted,

Sgt. Benjamin Spilman



## **Background**

In an attempt to improve customer service as well as to gauge the community's overall feeling of safety on Miami's campus, Chief John McCandless recommended that Miami University Police Department develop an evaluation instrument to be distributed to returning students during Summer 2005. This evaluation instrument was sent to a sample of one thousand returning students and the results were compiled into the department's first Police Services Evaluation for Returning Students. The first evaluation provided useful insight which helped guide our department as we made decisions regarding manpower allocations, crime prevention programs and other customer service issues. The same evaluation instrument was used again during Summer 2006 and has been used again during Summer 2007. With three years worth of responses, we hope to show trends in responses.

## **Methods**

The Police Services Evaluation for Returning Students was developed by the staff of the Miami University Police Department in the summer of 2005 as an instrument for measuring perceptions of safety on campus as well as students' impressions of the Miami University Police Department. The evaluation (Appendix A) consists of seven questions, some with multiple components. Most of the evaluation consists of closed-ended, multiple choice questions; however each question does allow an opportunity to provide comments or to clarify answers. The evaluation also provides an opportunity for the respondent to receive a call back from a representative of the police department if there are issues or questions that arise as a result of completing the evaluation. Finally, the evaluation asks that the respondent provide voluntary demographic information about themselves for purposes of determining whether or not a representative sample of returning students responded to the evaluation.

A directory was created in the police department's web site at <[www.muohio.edu/evaluation/](http://www.muohio.edu/evaluation/)> for participants to respond to the survey. The directory requires a unique user ID and password in order to limit participation in the evaluation to the intended sample group. The web page at that address (Appendix B) is the evaluation created by the department which collects the responses and e-mails them to <[policesurvey@muohio.edu](mailto:policesurvey@muohio.edu)>, an e-mail address set up specifically to receive the responses from the evaluation. The web page also gives the user the option to print a copy of the evaluation to fill in and mail to the department.

Offering an incentive in the form of a drawing for two fifty dollar gift cards to the Miami University Bookstore for those students who completed the evaluation appeared to increase participation from 15.8% in 2005 to 20.6% in 2006, so the same incentive was offered again in 2007. After completing and submitting the evaluation, the respondent was directed to another web page where the respondent could fill in their name, telephone number and email address to be entered into a drawing for the gift cards. The drawing entries would be submitted and emailed separately from the evaluation responses to protect the anonymity of the responses.

A random sample of one thousand returning students was obtained from the Office of Institutional Research. Those thousand names and unique IDs were mail merged into separate email messages explaining the evaluation and providing the web address where the survey could be completed as well as a user ID and password to access the survey (Appendix C). The message was sent with Sgt. Ben Spilman's return e-mail address and was sent in such a manner

that recipients would not see the unique IDs of others in the sample groups. Email messages were sent to the sample group on July 2, 2007 and some responses were received through the police department's web site that same date.

As survey results were received, they were entered in a Microsoft Access database by staff in the Records and Information Office at the Miami University Police Department. On July 10, 2007 a follow-up email message (Appendix C) was sent to the same sample group of one thousand students. A total of 197 valid responses to the evaluation were received resulting in a response rate of 19.7%, a slight decrease from increase of 0.9% from 2006. A total of 156 respondents entered the drawing for the bookstore gift cards.

Microsoft Outlook, the email/organizer program that was used to send the mail merged messages to the survey sample, employs security features that prevent mass mailings from being sent automatically in an effort to prevent unauthorized hijacking of a user's email program. An evaluation version of a program called "ClickYes Pro v2.5" distributed by Context Magic allowed those security features to be temporarily bypassed and send the high volume of email messages efficiently.

The two winners of the gift cards were chosen by using a Microsoft Excel function to generate two random numbers. The two winners, Kara Leonakis and Rachel Bailey, were contacted by telephone and notified that their name had been drawn as a winner. Both Ms. Leonakis and Ms. Bailey will pick up their gift cards from the Miami University Police Department when they return to school in the fall.

There was no cost for sending the two e-mail message to the sample group of one thousand students. The department spent \$100 to purchase the bookstore gift cards as an incentive to participate.

## **Results**

All of the questions in the survey were unchanged from the two prior years to allow for direct comparisons of results. The first question in the evaluation asks "Do you feel safe on campus?" The question is intentionally broad and seeks to get the students' overall feeling of safety on campus. The term "on campus" is not defined, but it is assumed that students recognize the difference between being on the University's grounds and being in the vicinity of the University (i.e., Uptown Oxford, fraternity houses, etc.) Ninety five percent of the respondents to the evaluation answered "Yes" indicating that, overwhelmingly, students feel safe on campus; the result was the same in 2006, in 2005 ninety six percent of the respondents indicated that they felt safe on campus.

In addition, fifty one comments relating to this question were recorded (Appendix E). Many of the comments were meant to modify their answer of "Yes" by saying they feel safe "for the most part" or "most of the time." Some comments requested better lighting. A number of comments centered on feeling unsafe at night but safe otherwise; some indicated that they felt safer on-campus than off-campus.

The second question asked “have you participated in any safety-related programs presented by Miami University police officers?” Twenty three percent of the respondents to the evaluation indicated that they had participated in a safety-related program; this number has grown each year from sixteen percent in 2005 to twenty percent in 2006(Appendix F). Sgt. Andy Rosenberger, the Community Relations Team leader, indicated that during the 2006-07 school year, officers conducted over 275 hours of programming which reached over 21,000 people in the University community.

Thirty five comments were offered along with the responses to question two (Appendix G). Some respondents attributed the “Great Escape” fire safety program to the police department as was also the case in previous evaluations. Many respondents indicated that they attended programs that were presented in residence halls.

Question three asks “have you visited the police department’s web site at [www.muohio.edu/police](http://www.muohio.edu/police) before today?” Twenty three percent answered “Yes,” down from thirty three percent in 2006 (Appendix H).

Ten comments related to the police department’s web site were recorded (Appendix I). The Miami University Police Department web site has been available online at [www.muohio.edu/police](http://www.muohio.edu/police) since December 1998, it was redesigned in December 2004 and is updated regularly. The department has posted Campus Crime Alerts and monthly activity reports on the web site since its inception. The site was created and is maintained by police department staff. When a Campus Crime Alert is issued, the details of that alert are posted on the Police Department’s web site, an announcement on the myMiami web portal and in the Campus Crime Alert email notice links directly to the Police Department web site. The Campus Crime Alert web page has been visited over 29,000 times since the December 2004 redesign.

Question four is an open-ended question asking “What is the most important safety issue that the Miami University Police Department can address?” There were one hundred fifty four responses to the question which resulted in a variety of answers, some contained several suggestions (Appendix J). The responses could largely be categorized as concerning: rape and sexual assault, nighttime safety, alcohol issues, lighting concerns, physical assaults, impaired driving and other traffic concerns and escort services. Many of the responses were lengthy, offering suggestions about how the police department can address campus safety issues.

The most common answer to the question was nighttime safety, over 36% of the responses dealt with nighttime safety issues. Alcohol issues made up about 20% of the responses, rape or sexual assault comprised approximately 18% of the comments. About 12% of the responses indicated that campus lighting was the most important safety issue that the Miami University Police Department can address.

Over the past three years, many of the same issues have been identified by students as important, but both rape or sexual assault and nighttime safety remained the top two safety issues according to respondents since the survey began in 2005.

The fifth question in the evaluation asks if the respondent has had an encounter with the Miami University Police since being a student. Only 6% of the respondents indicated that they have had an encounter with the Miami University Police, the same amount reported having contact with the Miami University Police in 2006, twelve percent reported contact in 2005 (Appendix K). Those who had an encounter with the Miami University Police were asked what kind of contact they had with the police, whether it was an enforcement contact where they received a citation, were pulled over for a traffic violation or were arrested; a victim who made a police report or was the victim of a crime; a witness; or community relations contact from attending a program or event where the Miami University Police were present. This year, the greatest number of responses about what type of contact people had with the police was a community relations contact, followed by enforcement contacts, witnesses and victims. Respondents could choose more than one type of contact in the event that they had multiple contacts with the police.

Respondents were asked to rate their overall experience with the Miami University Police Department on a scale of Excellent, Very Good, Good and Poor. A four item rating scale was chosen to reduce any central tendency error where respondents are more likely to choose a middle-of-the-road rating like “average.” Ninety five percent of the respondents rated their experience with the Miami University Police Department as “Good,” “Very Good,” or “Excellent.” Twenty four percent rated their experience with the Miami University Police Department “Good,” up from 22% in 2006. Forty one percent rated their experience “Very Good,” up from 40% in 2006. Thirty percent rated their experience “Excellent,” down from 33% in 2006. Four percent rated their experience with the Miami University Police Department “Poor,” down from 5% in 2006. (Appendix L) Forty five respondents commented on their overall experience with the Miami University Police. Some commented on individual experiences with the Miami University Police; there were many positive comments but also criticisms about individual experiences and perceptions about alcohol and parking enforcement (Appendix M).

Question six asks respondents to indicate which of the services that the Miami University Police provides that they would like to see more of. A list of seven items is given; foot patrol, bike patrol, vehicle patrol, community relations programs, traffic enforcement, alcohol enforcement, and drug enforcement. Respondents could also choose “other” and indicate what types of other services they would like the Miami University Police to provide. Respondents could choose multiple items. Foot patrol was chosen most frequently followed by bike patrol. Alcohol enforcement, community relations programs and drug enforcement followed, in declining order (Appendix N). Several respondents marked “other” and listed other types of services they would like to see the Miami University Police provide. Three respondents indicated that they would like to see no more control or less enforcement, other comments included horse patrol, case investigation, safety rides home at night and nightly patrols. (Appendix O). Twenty six respondents wrote general comments about the services that the Miami University Police provide. There were several suggestions about how patrols should be deployed and the perceived benefits of alternate methods of patrol (Appendix P).

Forty respondents wrote general comments about the Miami University Police Department in response to question seven. As in the 2006 evaluation, there was no common theme to the

responses, but many offered thanks for the service provided by the officers at the Miami University Police Department. (Appendix Q).

Respondents were asked to provide demographic information about themselves to help insure that a representative sample of students were included in the evaluation. Thirty eight percent of the respondents were male, 59% female. Eighty seven percent reported being of majority race, 6% reported minority. The class standing of respondents in Fall 2006 was reported as: 1% First Year Students, 29% Sophomores, 32% Juniors, and 36% Seniors. Thirty five percent reported living on-campus, 57% live off campus, 4% were commuters (Appendix R).

## **Conclusions**

Using the previous two years' evaluation results as a baseline to compare this year's evaluation results with, the Miami University Police Department has made advances in a number of areas that are evaluated. From the 2005 evaluation, we discovered that students were far more likely to respond to an email message than a postcard, so email communication was exclusively used for the 2007 evaluation. The department also offered an incentive in the form of a drawing for two \$50 gift cards to the Miami University Bookstore for students who completed the evaluation again this year. The response rate dropped slightly (0.9%) from 2006, but was still significantly higher than 2005 (15.8%).

Ninety five percent of the respondents indicated that they felt safe on campus; this has remained consistent since the beginning of the survey in 2005. The percentage of respondents who indicated that they had participated in safety-related programs presented by Miami University police officers climbed each year, from 16% in 2005 to 19% in 2006 and 23% in 2007. The percentage of respondents who indicated that they had previously visited the Miami University Police Department's website grew from 22% in 2005 to 33% in 2006 but dropped to 23% in 2007.

The most important safety issues to respondents remained largely the same as in past surveys; most of the issues identified in this year's evaluation were also seen in responses in the previous two evaluations as well.

The number of respondents who indicated that they have had an encounter with the Miami University Police dropped from 12% in 2005 to 6% in 2006 and remained at 6% in 2007. At the same time, respondents' ratings of their overall experience with the Miami University Police improved: those rating the department "poor" dropped from 13% in 2005 to 5% in 2006 and 4% in 2007; "good" dropped from 28% in 2005 to 22% in 2006 and raised to 24% in 2007; "very good" increased from 32% in 2005 to 40% in 2006 and increased to 41% in 2007; and "excellent" increased from 26% in 2005 to 33% in 2006 and decreased to 30% in 2007. Overall, respondents who rated their overall experience with the Miami University Police Department "good," "very good," or "excellent" has increased each year from 87% in 2005 to 95% in 2006, to 96% in 2007. Foot patrol and bike patrol remained the top two services that respondents would like to see the Miami University Police engage in more of.

According to the Office of Institutional Research at Miami University, the undergraduate population is approximately 46.4% male, 53.6% female. Approximately 8.8% of the

undergraduates at Miami University are racial minorities and approximately 33% of the undergraduate students enrolled at Miami University live in on-campus housing. The demographic information reported by respondents to the evaluation appears to indicate that a fairly representative sample of the University's undergraduate population responded to the evaluation again this year.

### **Acknowledgements**

A number of people contributed greatly to this project and deserve recognition for their efforts. Mr. Richard Norman, the Senior Vice President of Finance and Business Services, and Mr. Adolph Haislar, the Senior Associate Vice President of Finance and Business Services both deserve our thanks for their support and guidance in this project. The Police Services Evaluation could not have been completed without the leadership and support of Chief John McCandless. Lt. Andrew Powers and Mrs. Kristy Webb of the Miami University Police Department were both instrumental in designing the original evaluation. Denise Krallman in the Office of Institutional Research provided the sample group information and provided valuable information about the demographics of the undergraduate population of the University. Ms. Rebecca Garnett in the Miami University Police Department Records and Information Office checked the evaluation responses daily and ensured they were entered in the database for analysis. And finally, many thanks to the students who took the time to complete the evaluation and provide insight into the Miami University community over the past three years that this survey has been conducted.

## Appendix A

### Police Services Evaluation for Returning Students

In order to improve the quality of service that we provide, we would appreciate your responses to the following questions about the Miami University Police Department. All answers are anonymous. Thank you for your participation.

1. Do you feel safe on campus? Yes No  
Comments:

---

---

2. Have you participated in any safety-related programs presented by Miami University police officers? Yes No  
Which ones?

---

---

3. Have you visited the police department's web site at [www.muohio.edu/police](http://www.muohio.edu/police)? Yes No  
Comments:

---

---

4. What is the most important safety issue that the Miami University Police Department can address?

---

---

---

5. Since you have been a Miami University student, have you had an encounter with the Miami University Police? Yes No

What kind of contact did you have with the Miami University Police?  
(Mark all that apply.)

- Enforcement (arrest, citation, traffic stop)  
 Victim (made a report, victim of crime)  
 Witness  
 Community Relations (attended program, event)

←

←

Based on your experience with the Miami University Police Department, please rate your overall experience:

Excellent    Very Good    Good    Poor

Comments:

---

---

---

6. Which of the services that the Miami University Police provides would you like to see more of? (Mark all that apply.)

- Foot patrol
- Bike patrol
- Vehicle patrol
- Community Relations programs
- Traffic enforcement
- Alcohol enforcement
- Drug enforcement
- Other: \_\_\_\_\_

Comments:

---

---

---

7. Feel free to include any general comments about the Miami University Police Department below:

---

---

---

---

---

Do you wish to have a representative from the Miami University Police Department contact you about this evaluation?

Yes No

Person to contact: \_\_\_\_\_ Telephone: \_\_\_\_\_

The questions below are optional. Your answers will help us ensure that our resources are being used efficiently and to ensure that a representative sample of students have provided input in this project.

Your gender:

- Female
- Male

Your race:

- Majority
- Minority

Your class standing in Fall 2005:

- First Year Student
- Sophomore
- Junior
- Senior
- Graduate Student

Where do you live when you attend classes?

- On Campus Housing
- Off Campus Housing
- Commuter

# Appendix B



06 Home  
Search  
Contacts  
News  
Sports &  
Events

- Police Department
- Campus Safety
- General Information
- Staff
- Statistics & Reports
- Community Policing
- Campus Crime Alerts
- Links
- E-Mail

## Police Services Evaluation

Thank you for your interest in the Miami University Police Department. We would appreciate your responses to the following questions about campus safety, the services that the Miami University Police Department provides and your experiences with the Miami University Police Department. All answers are anonymous. Thank you for your participation.

If you would rather complete this evaluation on paper and mail it to the Miami University Police Department, a printable version can be found by following the link below:

[2006 Summer Evaluation](#)

The evaluation can be mailed to: 2006 Summer Evaluation  
Miami University Police Department  
4945 Oxford Trenton Road  
Oxford, Ohio 45056

By completing the online survey below, you will be eligible to be entered in a drawing for two \$50 gift certificates from the Miami University Bookstore. After you submit your responses, you will be prompted to enter your name, email address and telephone number where you can be contacted should your name be drawn. The information you provide will be submitted separately from your survey responses and will not be correlated with your responses. [View information about the drawing is available by clicking here.](#)

1. Do you feel safe on campus?  Yes  No

Comments:

2. Have you participated in any safety-related programs presented by Miami University police officers?  Yes  No

Which ones?

3. Have you visited the police department's web site at [www.muohio.edu/police](http://www.muohio.edu/police) before today?  Yes  No

Comments:

4. What is the most important safety issue that the Miami University Police Department can address?

5. Since you have been a Miami University student, have you had an encounter with the Miami University Police?  Yes  No

What kind of contact did you have with the Miami University Police? (Mark all that apply.)

- Enforcement (arrest, citation, traffic stop)
- Victim (made a report, victim of crime)
- Witness
- Community Relations (attended program, event)

Based on your experience with the Miami University Police Department, please rate your overall experience:

- Excellent
- Very Good
- Good
- Poor

Comments:

6. Which of the services that the Miami University Police provides would you like to see more of? (Mark all that apply.)

- Foot patrol
- Bike patrol
- Vehicle patrol
- Community Relations programs
- Traffic enforcement
- Alcohol enforcement
- Drug enforcement
- Other

Comments:

---

---

7. Feel free to include any general comments about the Miami University Police Department below:

---

Do you wish to have a representative from the Miami University Police Department contact you about this evaluation?  Yes  No

Please complete the information below only if you want to be contacted about your survey responses.

Your name:  Telephone:

---

The questions below are optional. Your answers will help us ensure that our resources are being used efficiently and to ensure that a representative sample of students have provided input in this project.

Your gender:

- Female
- Male
- Decline to answer

Your race:

- Majority
- Minority
- Decline to answer

Your class standing in Fall 2006:

- First Year Student
- Sophomore
- Junior
- Senior
- Graduate Student
- Decline to answer

Where do you live while attending classes?

- On Campus Housing
  - Off Campus Housing
  - Commuter
  - Decline to answer
- 

Thank you for taking time to help us to improve our service to you. Questions or comments about this evaluation can be directed to [Sgt. Ben Saliman](#).

## Appendix C

### **Spilman, Benjamin SGT**

---

From: Sgt. B. Spilman [spilmabr@muohio.edu]  
Sent: Monday, July 02, 2007 11:22 AM  
To: [REDACTED]  
Subject: MU Police Services Evaluation

Dear [REDACTED]:

On behalf of the Miami University Police Department, I hope that you are enjoying your summer. In an effort to evaluate the quality of police services that our police department provides on campus, we are asking you to visit our web site and complete a short evaluation of campus safety and police services.

Our department's goal is to provide the best possible service in an effective, courteous and professional manner. While we make every attempt to achieve our goal, we welcome input from our community on how well we are doing.

This evaluation is designed for students who will be returning to Miami University in Fall 2007. All students who complete the survey will be entered in a raffle for 2 \$50 Miami University Bookstore Gift Cards. You can access it on the web at:

<http://www.muohio.edu/police/evaluation>

In order to complete the evaluation, you will need to log in to the site with the following login information:

User ID: <b>policesurvey</b>
Password: <b>student</b>

It is my sincere hope that you will take a few minutes to visit our web site and complete the survey. Best wishes for the summer, we're looking forward to your return this fall.

John M. McCandless, Chief of Police

**Spilman, Benjamin SGT**

---

From: Sgt. B. Spilman [spilmabr@muohio.edu]  
Sent: Tuesday, July 10, 2007 8:31 AM  
To: [REDACTED]  
Subject: MU Police Services Evaluation Followup

Dear [REDACTED],

This is a follow-up email to the message you received last week about an evaluation of police services here at Miami University. If you have not completed this evaluation, please click on the link below. If you have completed the online questions, thank you for your input on this important issue.

On behalf of the Miami University Police Department, I hope that you are enjoying your summer. In an effort to evaluate the quality of police services that our police department provides on campus, we are asking you to visit our web site and complete a short evaluation of campus safety and police services.

Our department's goal is to provide the best possible service in an effective, courteous and professional manner. While we make every attempt to achieve our goal, we welcome input from our community on how well we are doing.

This evaluation is designed for students who will be returning to Miami University in Fall 2007. All students who complete the survey will be entered in a raffle for 2 \$50 Miami University Bookstore Gift Cards. You can access it on the web at:

<http://www.muohio.edu/police/evaluation>

In order to complete the evaluation, you will need to log in to the site with the following login information:

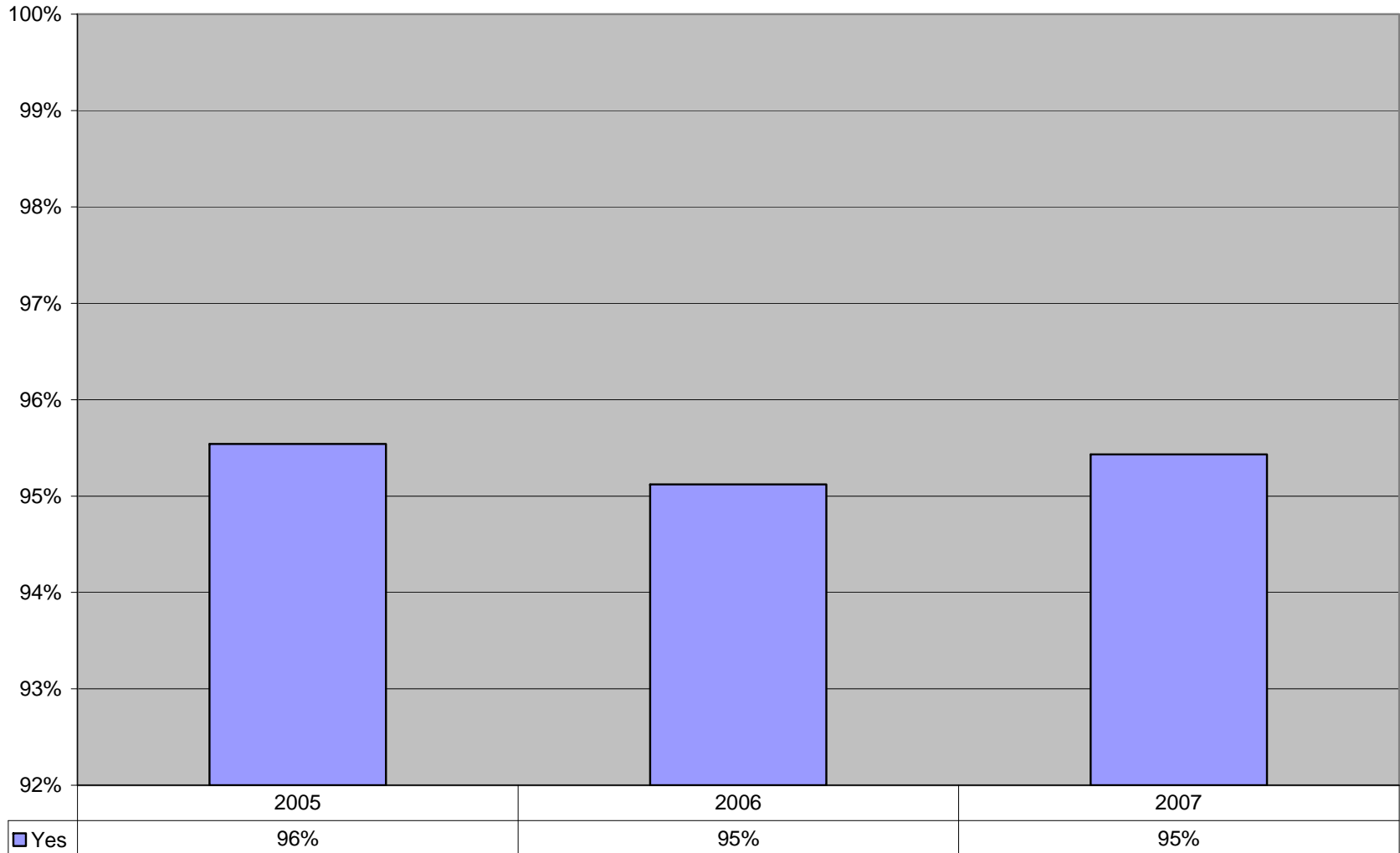
User ID: <b>policesurvey</b>
Password: <b>student</b>

It is my sincere hope that you will take a few minutes to visit our web site and complete the survey. Best wishes for the summer, we're looking forward to your return this fall.

John M. McCandless, Chief of Police

## Appendix D

### 1. Do you feel safe on campus?



## Appendix E

### Do you feel safe on campus? Comments:

" my house has been broken into, and i have had several friends be attacked or injured by others. I feel that the police department is too concerned about things such as parking and minor moving violations instead of bigger issues."

" Yes, for the most part. There are a few times when I walking to my car from King library when I feel a bit of stress. It's very dark in the area surrounding wells hall"

hear about robberies/rapes too often

I feel extremeley safe on campus.

" At times, I feel less safe when I am walking at night in poorly lit areas on campus. This happens even for classes that end at 9:40 PM in areas that are not lit well."

I always feel safe on campus, but the recent crime alerts have worried me.

"i do for the most part, but the constant safety reports of rape and robbery concern me"

"Some walk ways are not lighted but in general i have always been comfortable when walking home from a late class or club meeting"

" I appreciate the police making regular visits to dorms. I would appreciate it if these visits were even more frequent, especially on weekend nights"

When I am not alone

"I previously attended college in Newark, New Jersey, so it would be hard to not feel safe here."

Only during the day, but not at night when I am alone

"It is always comforting to see multiple officers walking and/or driving throughout the campus and its building throughout the day"

"Sometimes at night, I am weary about where I travel on campus. I don't like walking alone at night on campus"

Very.

MUPD's multiple types of patrols help to ensure a safe feeling arond campus.

"I've had my house broken into three times in two years and I don't think the Oxford did anything to try to stop it from happening in the future. I've also had attempted break-ins about three other times."

I don't go out much at night or engage in high-risk behaviors, though

"I feel secure when I am on campus, both in the afternoon and evenings as well."

" Although there are times late at night when I do not feel completely safe, especially with drunk students walking around on the weekends- in general I do feel like MUPD does a terrific job in handling any sort of situation."

"it is nice to see police cars driving around- i know the police is there, because they are always visible"

"The only time I don't really feel safe on campus, is late at night leaving the library."

definitely safe on campus, it's off campus at night that makes me nervous.

but sometimes at nights on weekends can be dangerous

"I feel safe the vast majority of the time. However, some areas on campus are not well lit at night which can be unsettling while alone."

"I generally feel safe on campus, but sometimes I feel as though I would benefit from a larger police presence at night, particularly at night."

only because not to many people try to mug 6 foot 4 inch 215 lb guys.

"The people I see the most are the rest of the college students, there are times that things can get a little hairy but that's usually someone just being"

"I do feel safe on campus, but I think a little more security could be established, especially after the incident at Virginia Tech."

"I don't think that our campus is lit well at all. Also, while some are offered, there are very few emergency phones. Both of these complaints are no fault of the police department."

" I don't feel as safe at night though, I rarely see police around Oxford unless they are uptown. What about the rest of the campus community?"

"Not because of police, they seem more interested in incriminating students than protecting them."

as long as i'm not walking after dark

"Yes, however I believe westurn campus needs to be watched more carefully. (Officers on bicycles would be nice)"

at night I have to walk girls home because there are shady characters.

"Yes...less when walking home from campus after an evening class. The slant walk sometimes is slightly uncomfortable."

Not at night.

Not at night by myself.

"I can walk around the campus at night by myself and feel safe as long as I am in a well-lighted area."

"There was a lot of unesiness a couple of years ago but things have calmed down, and I think safety is at a high"

except around the academic quad at night (doesnt apply on weekends)

Not at night, I carry a consealed weapon (legally)

" I would like to feel safer when walking home at night. It is not always that easy to find someone to walk with and that makes me very nervous"

Yes...although I still walked with groups of people.

"I normally feel very safe on campus, especially during the day However, the lighting at night is fairly dull and I am sad to say that a very close friend of mine was sexually assaulted two years ago as she approached Cook Field on her way home from the bars one night."

Too safe...cops are outrageously aggressive

I am hardly never afraid

"I generally feel safe on campus but walking alone as a female at night makes me feel uncomfortable."

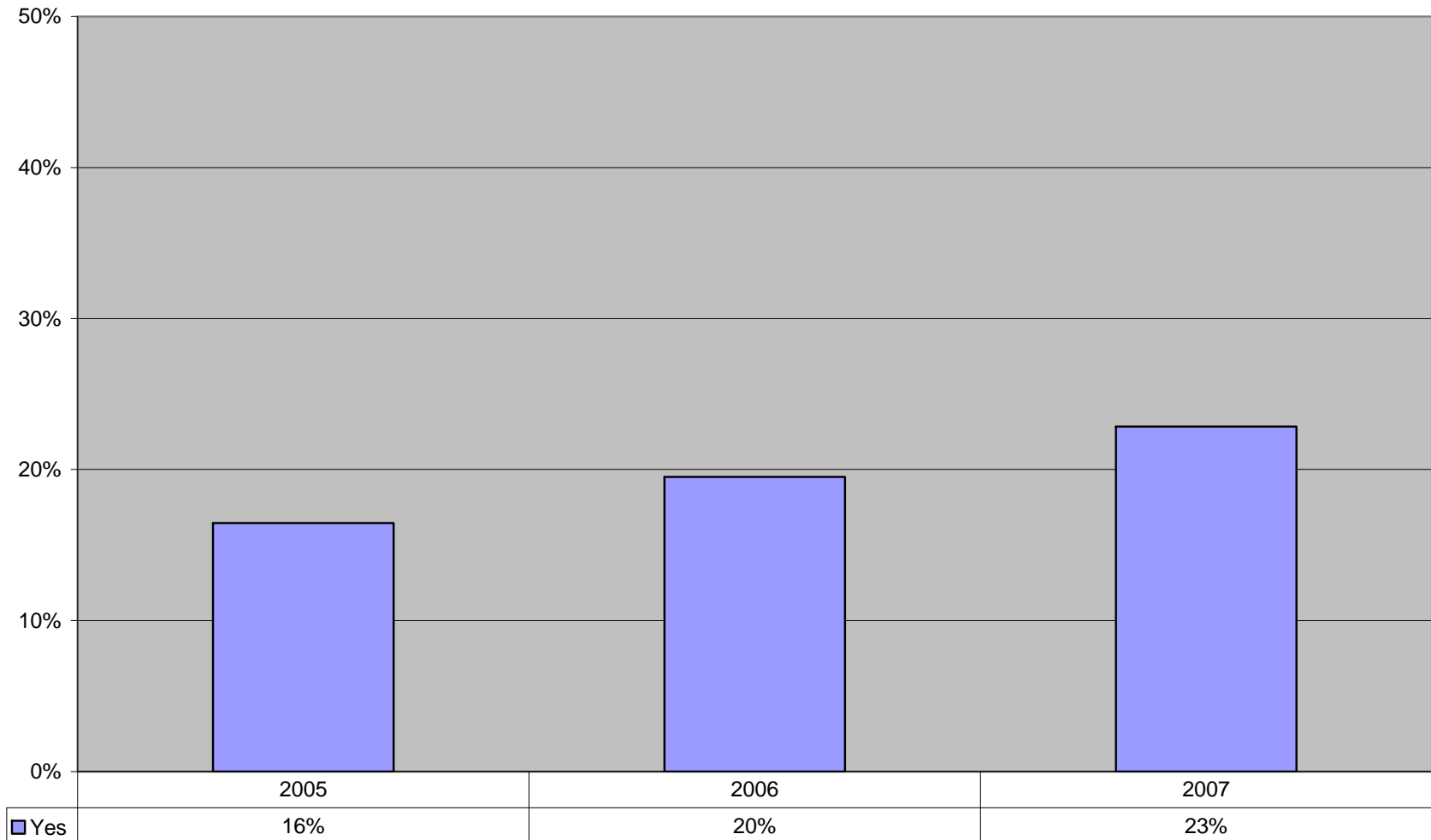
Sometimes at night it is really quite and dark. It needs to be brighter.

"I feel safe on campus, but I can assure you it's not because of the police departments involvement."

" On-campus seems more lit at night that off-campus. I would be comfortable walking alone on campus."

## Appendix F

### 2. Have you participated in any safety-related programs presented by Miami University police officers?



## Appendix G

### **Have you participated in any safety-related programs presented by Miami University Police Officers? Which ones?**

the ones required by dorms to attend.

" I attended a self defense seminar my first year on campus which was offered in the basement of my hall"

For PHS 116 class... Presentation

" The Phi Tau fraternity did a presentation about the dangers of drinking to much alcohol."

Fire emergency ones.

North quad safety bash

I don't know

The fire safety talk.

Fire escape route

One for my entire sorority. It was about drinking and being safe on campus

self defense talk at a sorority meeting

Residence Hall Association Safety Week-MU POLICE VISIT IN RESIDENCE HALLS

Dorm fire exit (with fake smoke in halls) - Morris Hall

But I am trying to plan one for the fall in Flower Hall.

" Heard the Miami and Oxford Police speak at the Joint Presidents meeting for Greeks."

"When I was an RA, we had our liason, Regina Rapp, come in and speak to our staff about what the MUPD does."

"I participated in a fire safety demonstration in my dorm with a slideshow and simulated fire."

Risk management demonstration in sorority.

" the program that they had on the lawn of hepburn, mcfarland and Brandon fall of 2006"

Residence hall safety programs, MUPD student relations committee

at orientation program for international students last fall.

"A demonstration on the south end of campus in front of Harris dining hall. The SWAT dept and dog were there"

I think something in the dorms.

I did not know that they offered any! I would love to take one though!

Alcohol courses.

Residence Halls.

In residence halls.

no

Forgot the name, but he's the one in the Naval Reserve.

I would like to that would be fun, took some self defense classes though

We had the police do a presentation for Brandon Hall.

2 policemen talked with my sorority during chapter

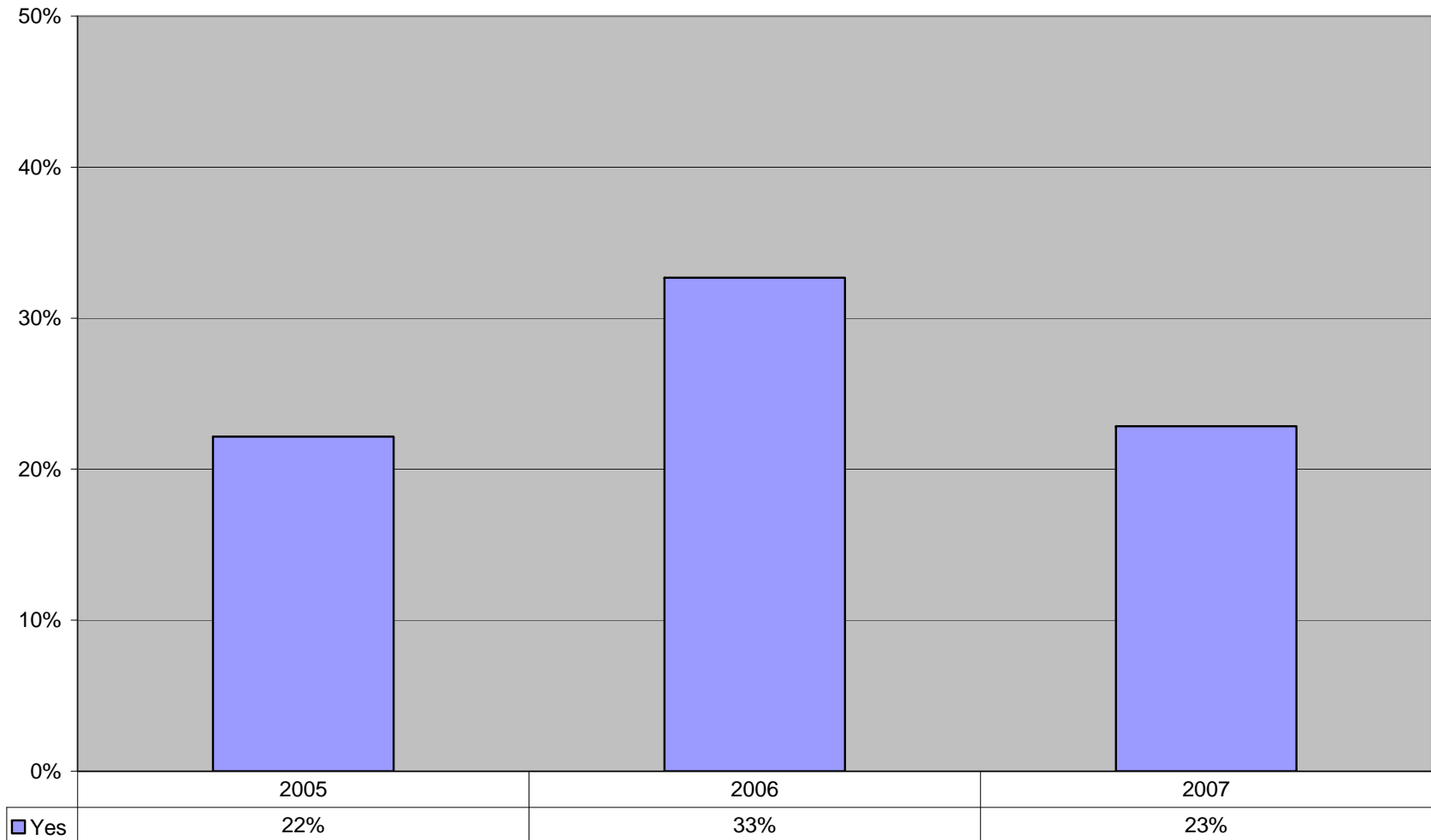
Fire Safety

"I was a resident assistant in a freshman dorm last year, so we did question and answer sessions, fire safety, and a demonstration by the police and SWAT team."

freshman dorm activity

## Appendix H

3. Have you visited the police department's web site at [www.muohio.edu/police](http://www.muohio.edu/police) before today?



## Appendix I

**Have you visited the police department's web site at [www.muohio.edu/police](http://www.muohio.edu/police) before today?**

**Comments:**

no

I like the updates about crimes on campus

Very helpful website.

" As a member of Associated Student Government, I often read the crime reports and statistics. I have also researched self-defense training for students living in my residence hall after reports of rape and sexual assault."

I was not aware of the police department's web site until today.

"I did a ride along the beginning of last school year and I visited the site then."

I had an issue with my car in the Millet Parking Lot

for crime alerts

no

"I also visit the Oxford police department web site, probably more frequently (due to the crime alerts)."

## Appendix J

### **What is the most important safety issue that the Miami University Police Department can address?**

Drunk Driving

Ensuring a quick response on calls

student safety and just, fair, and accurate trial of events

Safety at night uptown

students walking home alone; drinking and driving

traffic issues

"Lighting the crosswalks on campus, it is very scary to cross the street at night a lot of times."

Students who speed and try to run you down

Safety pertaining to rapes

Safety pertaining to rapes

fights off campus

I think that monitoring uptown during the weekends is key

late night safety

"I feel like there is a problem with residents of Oxford or other people who come into Oxford and bring in drugs and/or commit robberies and vandalism"

Late Night violence beyond when the bars close, (3 AM- 5AM

rape

Fire codes in houses

"Being on campus at night, but not just on weekend nights. I know the police officers are around, but when you are walking back from dropping your car off or walking back from a evening class, its feels better when you see a friendly face"

"making sure kids get home safe at night, i.e. other options for transportation from bars"

"I think the biggest issue would be making sure if they see someone walking home late by themselves (from the library or party) they stop and offer them a ride, especially girls."

" I'd say that the most important issue is the intoxicated people that roam around and commit crimes like rape and theft."

### Burglary

"Presence on campus at night. I think that students, particularly girls, feel less safe when they are walking at night. I usually drive everywhere I go when I leave at night, but it can be stressful just to walk to your car, since parking is often scarce on campus. I would feel safer if there were more officers on foot or bike. Vehicle patrol is nice, but I believe that if officers are on foot or bike, they will be more aware of potential crimes."

binge drinking and theft

Alcohol abuse and the dealing with unruly students.

"Not drinking in excess...alcohol consumption is a really big part of Miami, and people take it too far."

### Sexual Assaults

### Sexual Assaults

"Helping the students to be safe at night. Provide ride service to them, schedule alternative events (that students want to attend) on campus so that the students have something to do besides drinking uptown."

"Safety for young women traveling to and from Uptown or off-campus apartments late at night."

"The most important issue that MUPD can address is how students can stay safe when partying, including addressing the dangers of drunk driving."

alcohol related problems

Better Lite areas while walking through campus.

students walking home at night, especially to far dorms

"the safety of students late night as bars are closing, but not so much on high street, but on the side streets where attack or incident is more likely to occur"

### Drunk Driving

"Crime from peoples outside of our student body, such as those who come into Oxford from the surrounding area and do not belong there."

Preventing intoxicated students from hurting themselves or others.

Safety walking home at night

Muggings

"I don't know if the police department can do anything about it, but more streetlights on side streets would be nice. The only time I feel nervous in town is when walking around in the dark neighborhoods, like between High and Sycamore."

"Patrolling at night when people are walking home from bars etc. to prevent robberies, rape, assault."

"Late night protection after everybody is leaving the bars and parties and walking home."

Patrol the neighborhoods more than uptown.

Drunk driving/public intox

Rapes on campus and burglaries.

Assault

protecting off campus homes from sketchy people/criminals

"How to keep yourself safe both on and off campus. I know many students get tired of hearing people tell them to lock their doors and not to walk alone at night, but when you're in a dangerous situation those little reminders can help save your life."

"Late night safety, specifically in the time I've been at Miami, there have been an alarming number of rapes. I'm not sure how these numbers compare to years past or other univeristies; regardless it's a major issue. For some reason, many girls still seem way too comfortable walking home late at night by themselves despite what has happened on our campus. Possibly some sort of mandatory educational seminar on campus safety should be instituted for all incoming freshman."

Night safety

Weekend safety and night escorts.

"Off-campus safety seems to be the most important. Also, the number of emergency phones around campus could be increased, but my guess is that those don't get used much, if at all."

Being able to safely walk home

"The most important safety issue at this time is the safety of students on the weekends. Officers are taking the time to educate students not only on the alcohol/drinking laws of Ohio, but also to teach responsible drinking habits for students who choose to drink. Campus security, to avoid events such as the shooting at Virginia Tech, is also an important priority."

Attacks on Students at nighttime, especially in dorms.

Girls walking home alone

Alcohol related issues. Also, pedestrian safety.

Enforce safety uptown Thursdays-Saturdays

" I think the Oxford police need to work on minimizing all the break-ins and quit worrying so much about students drinking and worry more about bigger issues like break-ins and students' things being stolen."

"Safety for students who live off-campus, i.e. burglary, rape, attacks as students walk to and from houses, etc."

I still think that we have a big problem with rape prevention.

The relationship between Oxford citizens and Miami students

having adequate lighting along sidewalks

Maybe putting more lights up on roads, so that it is not so dark at night.

Rape... over-consumption of alcohol, DUI

"Probably just to keep everyone informed about how to be safe. I think teaching a few self-defense classes would be a good thing."

"The most important safety issue to address would be underage consumption of alcohol or overconsumption in general. It is especially important with regards to the accident at the train tracks last school year when a student was killed by a train."

" Students need to be aware that even though we feel we are in small, friendly community, we still need to use caution to protect our property. Often, students don't lock doors or are too trustworthy of people they do not personally know."

Violence attributed to underage drinking, including fights, rapes, etc..

binge drinking and overconsumption

"Safety on campus. We all try to never have to walk at night alone, but sometimes we have to (for one reason or another) and we would like to feel safe when that happens."

rape

" I suppose predators who are not Miami students and also just basic safety of the students, particularly when so many are drinking underage. (having to deal with drunken classmates when you are trying to sleep at night and they are yelling down the halls or destroying things is really obnoxious and a real hassle.)"

Lighting on sidewalks and alleys. More security in off-campus homes

"Many of the crime alerts published last semester were altercations resulting from individuals who were not being smart about their person safety For example, much of last semester's trouble could have been avoided if people would not walk alone on the streets at night between the hours of 1:00am-5:00am, or if they would just lock their apartment doors at night before going to bed. In short, the importance of personal safety (i.e., just using the brain God gave you) needs to be stressed to the students (and staff?); and, I believe, would go a long way in preventing future problems."

more secure ways to keep people out of dorms who don't actually live there.

safety at night

"We should have those blue safety lights with phones that I've seen on other campuses. They aren't exactly the prettiest looking things, but I'd rather be safe and have the blue lights instead of being more at risk without them."

"I think that lighting on campus at night is a pretty big deal--walking from king to Flower Hall is a long trek at night especially when only maybe half of the lights on campus even work"

Physical assault (reducing risk of alcohol-related crimes)

Alcohol related violence.

lighting on campus

"despite my being a male, i would say it is female safety with rape and everything. Especially after what went on two years ago"

late night muggings (not too big of an issue though)

"Off campus safety on the weekends, especially at night, seems to be the most pressing safety issue, though you all are doing a great job of keeping off campus areas as safe as possible."

Drinking and the negative effects from it.

drunk students

Alcohol!!!!!! It is linked to most other criminal behavior on campus!!

" I am not sure that there is anything that can be done to improve safety dramatically. Many of the crimes that occurred were the result of bad decision making by the victims and the police can't help individuals make smarter choices."

Making sure people are safe in the dark/night.

" The most important safety issue that must be addressed are the areas of the campus where one parks while attending night classes. A classic example is Cook field where student commuters and part-time evening professors park while attending these evening classes. When returning to my car one evening last fall after my night class, I was harrassed by two students who were hitting stop signs, yelling loudly, and throwing rocks at stationary objects. In addition to this, they were walking in such a manner as to try and run in to me, but I was able to elude them in the process. Many students who attend evening classes are older, non-traditional students who pay good money to achieve degrees at the university and do not appreciate conduct such as this on campus. The incident was reported last fall to campus police which resulted in the Cook field stadium lights being turned on nightly, but the presence of police still is not being felt in the area."

rape, bugulary

the number of underage drinkers and the things they do while intoxicated

" Late night violence towards men and women, especially sexual assault against females. This is particularly problematic on weekend nights after people go out."

getting students home safely

safety at night

"maybe the police department should do a better job of assessing what's truly important in the community. on green beer day my friend recieved a traffic ticket for an illegal ""U turn"" into a parking space on the other side of the street when simply trying to stop for coffee on high street before a test. at the same time a car full of drunks loaded into a car right next to him and drove off. seeing as how he had a test he may have been the only sober person in oxford at the time, but he was the one receiving a ticket. this is one of many instances where i've thought judgement of what's important is poor. i'm honestly not concerned whether it involved miami police or OPD. as i see it police departments are a joint force that are all connected to one another and simply saying well that wasn't our department is hardly an excuse for poor police action."

violence/ fighting at night

Safety around campus at night and the early morning.

"I think that it is important for girls to be aware that it can be dangerous to walk around campus alone after dark. They offered a self defense "class" in my dorm sophomore year, and I thought it was a really good idea."

Safety of students after late night partying

unlit areas on campus (western)

"Watching for people walking alone at night or those acting suspiciously at unusual hours."

"What I worry about the most at Miami, honestly, is getting attacked or raped."

There are so many dark areas on this campus. I make it a point to never walk alone . . . which seems to be common sense no matter where you are. Still, walking with friends I worry at times."

"Night-time safety for women. Another issue is safety for women when drinking, it seems to be a major problem lately."

Not to walk alone at night.

Locking doors

safety at night

"Work more on protecting and serving and less on fucking students over Students are going to start hating the police in Oxford."

drinking and rape issues

Campus Crime, theft- late nights

" I think there should be a better service that takes students to their dorms from the library (or any on-campus building) late at night. The system needs to be more clear and accessible."

potential rapes and attacks

underage drinking

Rape, sexual assault

Late night patrol's for sidewalk/path safety.

"I sometimes feel as if the police focus too much on menial issues that are never going to stop taking place--underage drinking--and not enough attention on actual crime. There is a sense on campus that the police should be out to protect you, and many people feel the opposite. I think to be realistic in Oxford is to realize that some crimes are more severe than others, and underage drinking is going to continue to occur large scale, but things like stabbings and rapes must be controlled. They not make the student body feel unsafe, but sully the University's national reputation--I saw a national news show talking about the crime wave in Miami."

Proper lighting of the campus

Keeping me from getting mugged with a gun.

Walking at night.

"Making sure everyone walks home with someone from houses and bars uptown. Make sure everyone has a Driver if drinking and going uptown."

Walking at night.

Keeping students under the influence of alcohol in line and safe

don't walk alone

Keeping students safe when walking around in the dark

women's safety

"Students, particularly intoxicated, are the biggest concern for safety, especially when they are alone."

Alertness of campus crime occurrences.

"Increase presence on campus at night. The lighting on campus is decent, but not great so having more officers visible (driving, walking, biking) would make people feel safer."

people walking home alone, especially off campus.

My safety when walking home at night

"the Crime Alerts..Those were helpful and I felt like they were really trying to inform us as the situations that might be present on campus"

Lighted quad areas and other dark sections of campus

walking on campus at night

Protection of females on campus.

"Stopping sexual assaults. I say this not only because of the incident with my close friend, but because it has been a major issue in recent times as many women have fallen victim."

Rapist..not drunk kids

Sexual assault on campus

"Making sure the campus is properly lit especially on western campus. Providing rides for females or males at night time."

" With the latest trend in women's fashion I believe sexual predators and keeping girls safe at night are probably the most important safety issue."  
probably alcohol

Underage drinking

"poorly lit streets and alleys at night can be a danger, especially for people walking by themselves or with a minimal accompaniment"

driving under the influence

" Rape... So much of the rape goes unreported and it happens a lot especially at the parties. A lot of the girls don't know what to do because they were drunk at the time so they don't even report it and the guys never get caught."

alcohol and walking home alone

alcohol

ensuring students do not need to walk home alone late at night

"I think that having a visible police presence on and off campus is the most important thing. I am very appreciative that you will pick us up if we have to walk home alone. There were a number of times last year I called the police department after a late night of studying at the library for a transport home to my off campus house."

"Last year the attacks on various miami female students was scary for many of us but the MU police department did an outstanding job alerting the students to the threats and made me feel much safer."

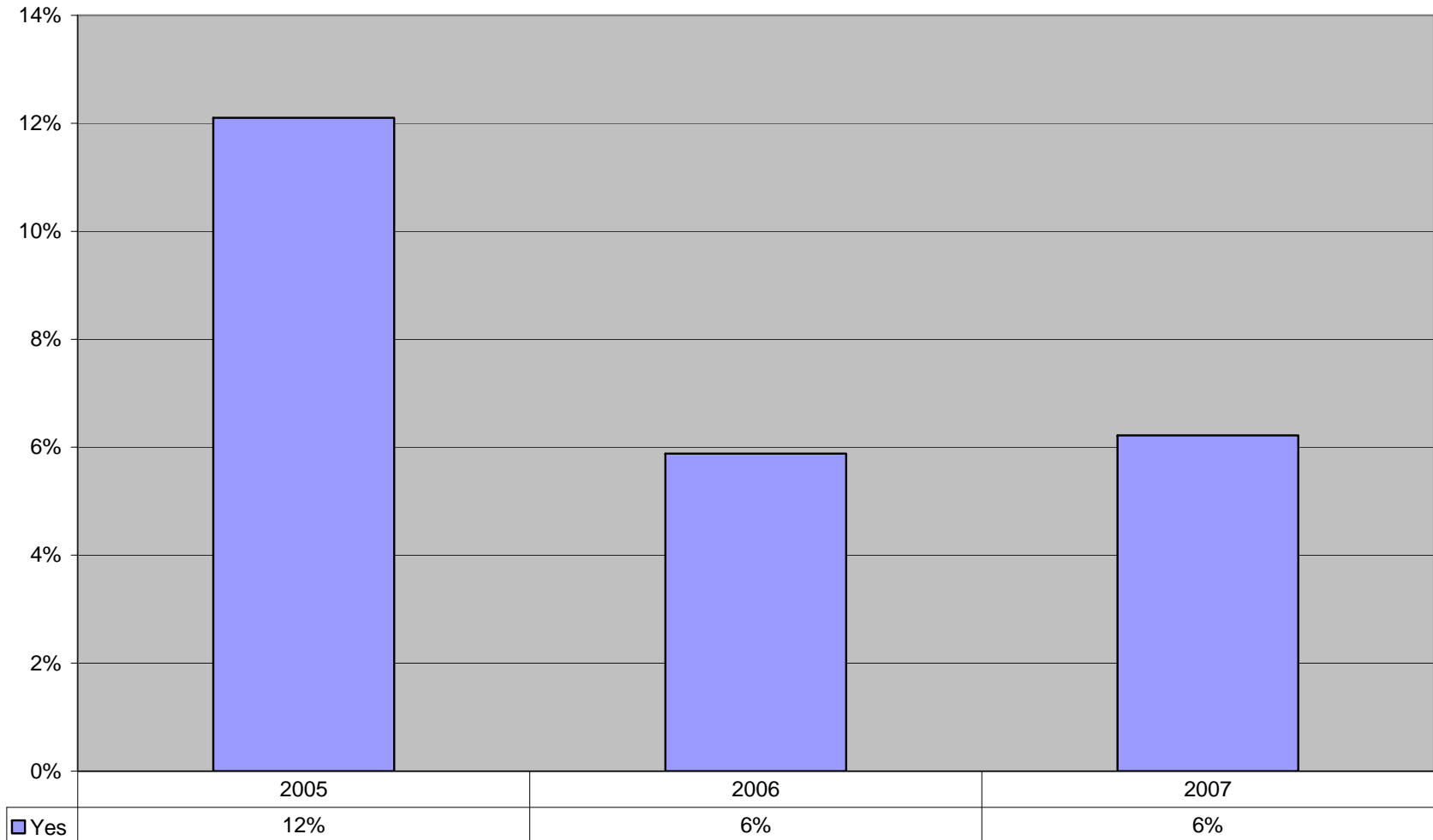
Rape.

"People, especially women, leaving uptown late at night and on the weekends. Many decide to walk, especially if they have been drinking, and off-campus streets can be a bit questionable (try the scary dark area on south main street where the pine trees are...)"

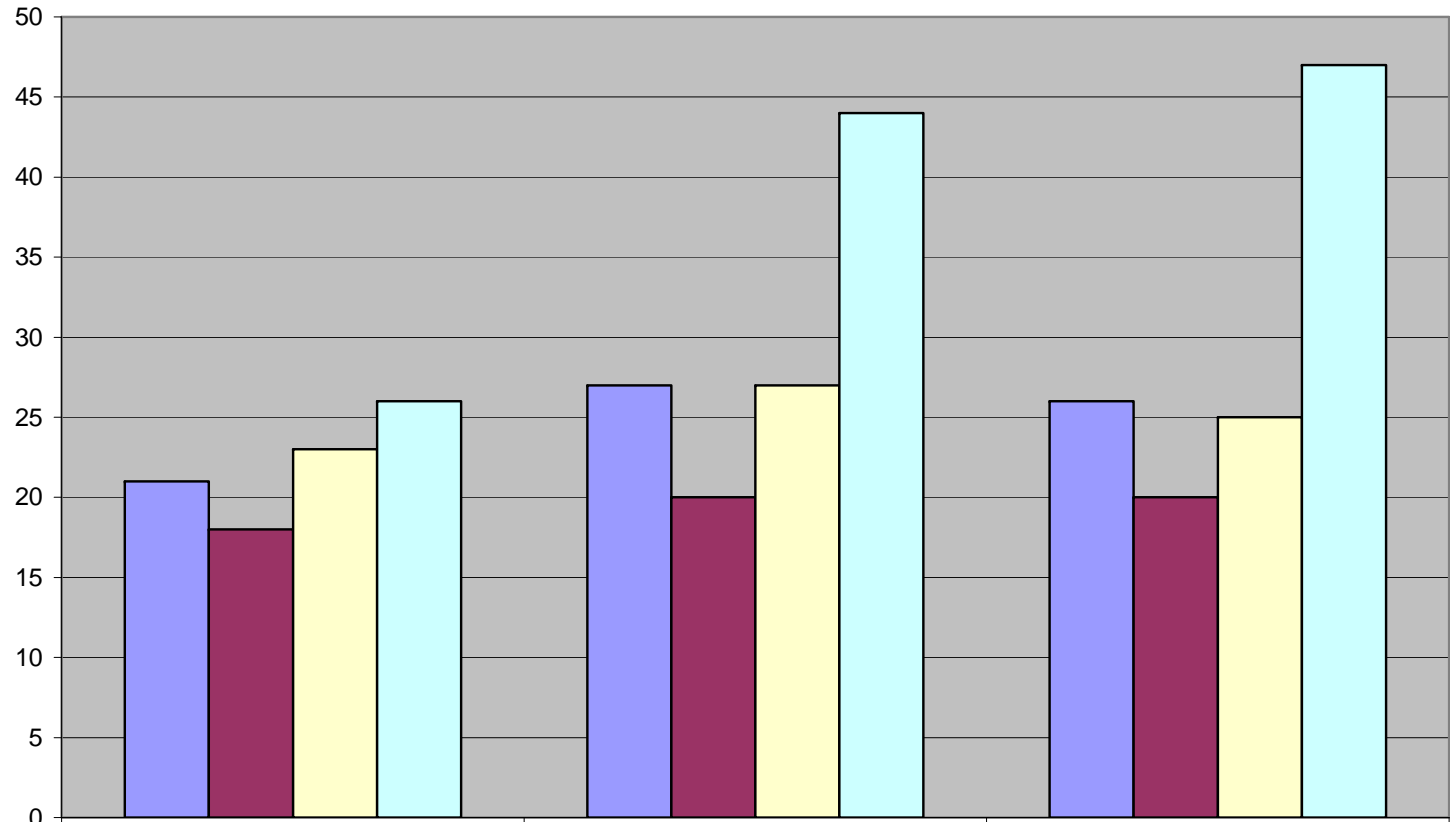
nighttime security/safety

## Appendix K

**5. Since you have been a Miami University student, have you had an encounter with the Miami University Police?**



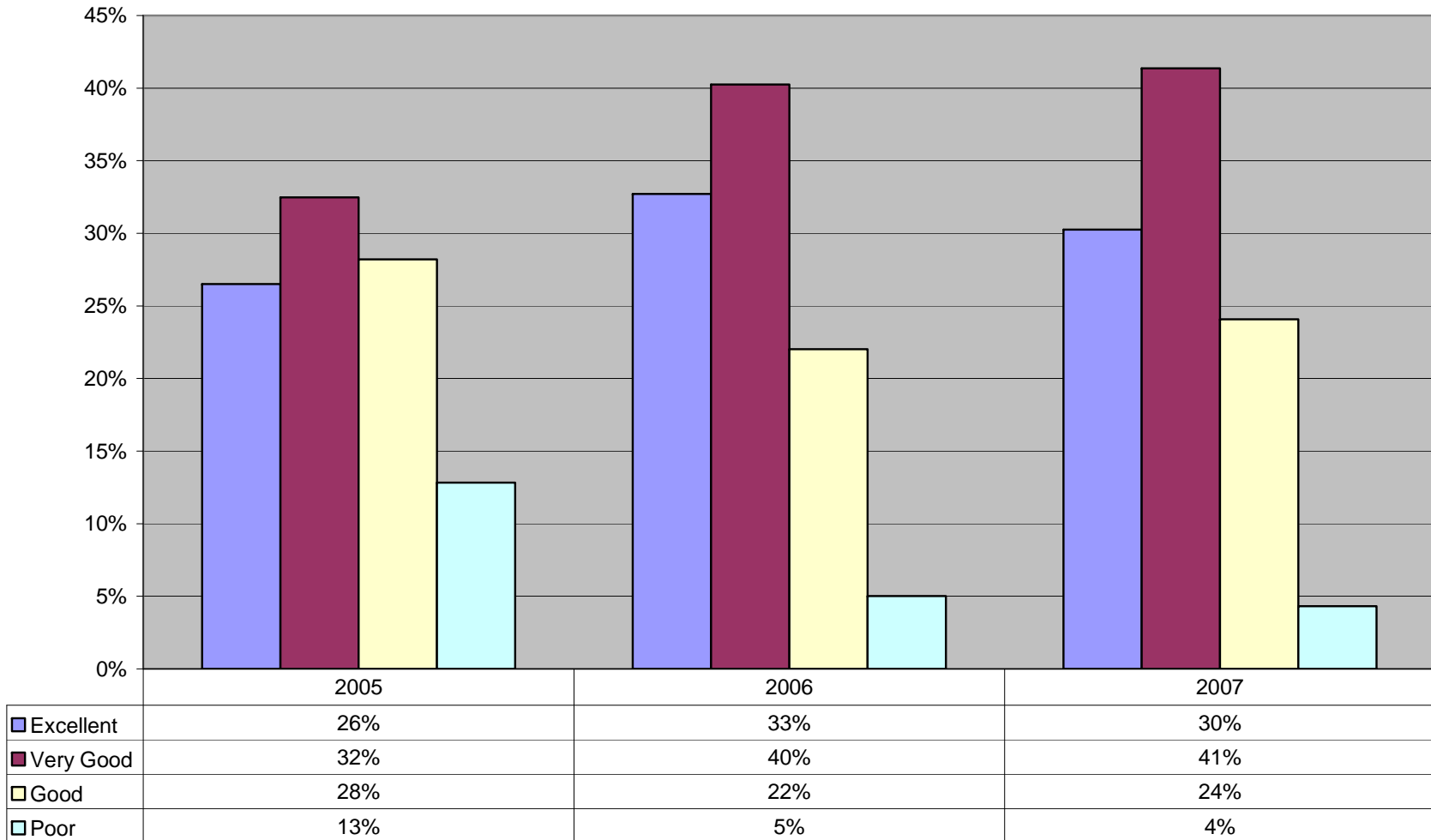
### What kind of encounter did you have with the Miami University Police?



	2005	2006	2007
Enforcement	21	27	26
Victim	18	20	20
Witness	23	27	25
Community Relations	26	44	47

## Appendix L

**Based on your experience with the Miami University Police Department, please rate your overall experience:**



## Appendix M

### Comments on respondents' overall experience with the Miami University Police:

"some officers have helped us when our home was broken into, but my housemates and friends have been victimized and uncared for more often than not"

" I love working with the MUPD for events and there is always someone to answer my questions"

"unfair treatment to various situations..no consistency on punishment in certain circumstances"

Need to actively pursue theft more vigorously.

very friendly and helpful and supportive

Faster response time would be nice.

" Just ran into a few police officers around campus, said hello, nothing special."

"Officer Keith is the nicest and most caring guy. He gets to know the students and takes care of them as if we were his own kids"

"I was fingerprinted for student teaching and everyone was professional and courteous."

" Miami University Police officers have shown great concern for the safety of the students and a genuine care for our community."

" My friend that was visiting me from her school, was arrested because the policeman said that she could have alcohol poisoning. He said that she could barely walk. The policeman failed to realize that my friend was wearing high heel shoes that were broken and that was why she couldn't walk perfectly. I truly believe that the policemen are too strict and that this could affect the school because people are not going to want to come to a school were you get arrested for having a drink. Other schools are not strict like that."

"Two officers escorted my (inebriated) roommate back to our room. They seemed nice. Can't really say much more than that."

" Haven't had to contact them, meaning that I have not been in trouble or needed help."

MUPD officers have always been professional, courteous, and willing to listen to any complaints or suggestions by students. Most officers also understand that students are there for learning and the officers take the time to interact with all students on a personal level rather than waiting until the student gets in trouble."

"The policeman who came out to make a report was very helpful and professional."

" When someone broke in my house and reported it, the police officer acted like he didn't care at all about it and was not very nice."

" Miami officers are more considerate of students than the Oxford officers. They seem more understanding; their counterparts at the OPD are rude and short with students"

" Last semester, my car battery died and I called the MU Police Department to come help me jump start my car. The officer was very helpful and responded quickly."

Everything I've seen with MUPD has been handled professionally

"when i injured my knee and was on crutches, i was waiting for the Miami van in the rain, and an officer pulled over and offered me a ride back to my dorm. without the regular patrols and the respect and attention they pay to the students and staff at miami, this wouldn't have happened"

"When I was an RA, I called MUPD quite a bit! And even if it was 3 a.m. and for some kid who they had picked up 4 times already that month, they made it to the dorm as soon as possible and handled the situations with courtesy. Once I locked myself out of my car and an MUPD officer came out quickly and helped me get it unlocked and even turned off the alarm!"

"The police seem genuinely concerned with the well-being of the students, and I find that very comforting."

"I am also a University employee, who uses the transportation services of the police department several times a week. The level of cooperation and professional work ethic of every officer is remarkable and much appreciated!!"

"I have only had parking citations but one was because I was stuck in snow in a parking lot. It was a holiday and most people had gone home, leaving more than half the parking spots open in the lot. I still got a ticket because I had to wait to have people help me out of the spot. Whatever department is in charge of plowing does a poor job and I think the officers writing parking tickets should take that into account."

" I was dropping something off at the Office of Ethics and Conflict Resolution and an MUPD officer that was there answered some questions I had regarding another student that had attacked me and my rights. I believe I still have his business card and would feel free to contact him with questions."

Being an RA, you guys are the greatest!! Always helpful and fast!

"Not being involved first hand with the MU police is a good thing—it means that in the year I spent on campus, I didn't see or experience crime. Thanks for doing a great job!"

" The time that I was stopped for a traffic violation the officer was very respectful and was even able to carry on a polite conversation while doing his job."

I have not had much direct experience with the MU Police Department.

"My car was hit by another student who reported it to the Miami Police. I was contacted about the incident and when I got there, the officer there was very nice and helpful."

Most of Miami's officers whom I have met have been very personable.

"I NEVER see Miami police unless they are uptown late at night or they are sitting, giving speeding tickets. It seems as though they are more concerned with making money from tickets."

"They were more focused on who was breaking stupid laws in the area like underage intoxication and less interested in the robbery that occurred"

Very friendly, helpful

The police responded quickly and restored order relatively quickly

some officers helped me and my friend get her car out of the snow.

"I think that both the Oxford Police and the Miami Police can be overly strict."

This isnt the NYPD

" a female officer was walking though heistand late one evening as i was finishing up in the ceramics studio and she offered to drive me home and then did so."

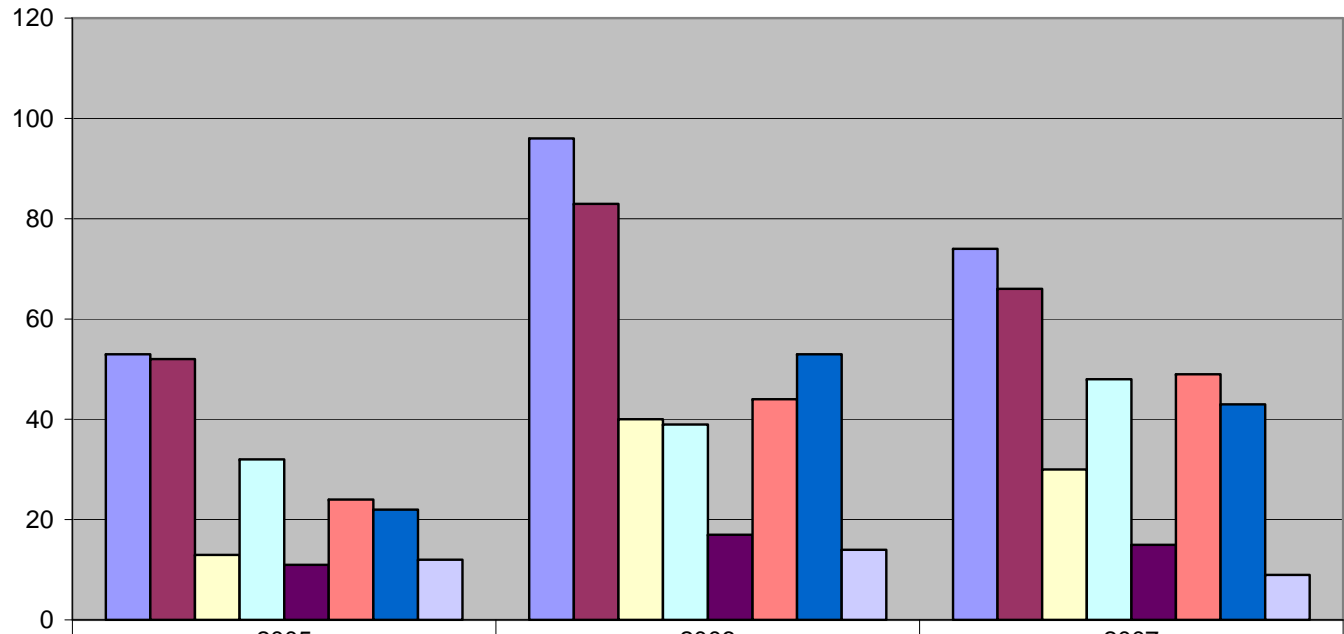
"A group of friends and myself were swarmed by 3 police vehicles while walking down the street. The officers assumed that my friends and I were participating in illegal activities when we had not and had no intention of. We explained this to the officers and they insisted we were and felt obligated to search all of our persons. They conducted what I can assure you were very thorough examinations of our persons and found nothing. I checked enforcement and victim in the boxes above because we were stopped, on foot not in a motor vehicle, and were victims of profiling. Due to the odd hour we were walking, no more than 30 yards from our dormitories and quad, and the personal vendetta of one officer we were given no chance to explain ourselves and were immediately subjected to search all for walking down the street. I saw no reason for the searches, which produced nothing, and felt as though my rights as not only a student, but as an American citizen were violated that night. There were several other incidents that mirror this one, but I will spare you the details of those. It's this mindset of the campus police that makes me feel un-safe on campus. It's that very same mindset that makes me fear not for myself, but for my rights."

" I'm sure I've had some parking tickets (haven't we all?), but the police seem to patrol the area very well. I have never had any major issues."

" I really havn't had that much experience with them, besides being driven home from the hospital late at night. I was glad that they did that though."

## Appendix N

### 6. Which of the services that the Miami University Police provides would you like to see more of?



	2005	2006	2007
Foot Patrol	53	96	74
Bike Patrol	52	83	66
Vehicle Patrol	13	40	30
Community Relations Programs	32	39	48
Traffic Enforcement	11	17	15
Alcohol Enforcement	24	44	49
Drug Enforcement	22	53	43
Other	12	14	9

## Appendix O

### **Other types of service respondents want to see the Miami University Police provide:**

No more control

horse patrol!

case investigation

saftey rides home at night

Nightly patrols

less alcohol enforcement

no more

catching actual criminals (i.e. rapists

## Appendix P

### **General comments about which of the services that the Miami University Police provides would you like to see more of:**

"I believe the current level of enforcement is sufficient. There are enough officers to provide a safe atmosphere but not so many that students feel intimidated or nervous."

"again, the department is seemingly more worried about traffic enforcement than about preventing crime."

"Drinking is out of control at Miami and one of the reasons is that not very many people face consequences for their irresponsible actions"

"I feel that the police department is getting so caught up in the alcohol and drug enforcement that they are neglecting their other duties such as providing more safety for the common student on campus and off"

"Even though i hardly drink as it is, I believe that the University makes too big of a deal on alcohol. Although safety is important, particularly when it involved thousands of students who are possibly drinking, the authorities have to realize that we are in COLLEGE in the middle of CORNFIELDS. I am not trying to say that it should be legal or anything like that, but try to remember when you were in college. Also, foot patrols, even when off duty would be a great way for students to get to know the officers. Walk around uptown and engage students in conversation, ect."

"I think a stronger foot and bike patrol around the off-campus areas would help deter would-be criminal behavior."

"I think getting out, walking around, and generally associating with the students would go a long way in improving relationships between students and law enforcement"

I think everything is fine the way it is.

" I was almost hit by a drunk driver in uptown when I crossing a street The driver just flew around a turn without looking, probably never even relized that she almost ran over me. I tried looking for a police officer since she was trying to pick someone up, but I could not find one around."

Bike patrol can cover areas cars can not.

"There is an increasing number of students using cocaine and aderol without a prescription. This has, by all accounts, gone unnoticed by the Oxford Police Department."

"Foot patrol is unnecessary in my mind unless an issue has arisen, although there are some incidents where fights occur, especially uptown I believe Vehicle and drunk driving incidents

should be the chief concern. People may drink and walk home but usually they are being safe about it."

Mounted patrol (I think Regina's program is/was great)

especailly through the residence halls

"it would make me feel more secure if i regularly saw officers walking the campus but i never do. i would especially like to see them walking the campus at night."

I would say just at night

" I don't really think that they need to increase any of these. They are close enough that they can respond to a call very quickly from the station"

"more of all of these enforcements and patrols are really irrelavant due to the fact that enforcement doesn't stop poor behavior, personal reasons motivate behavior. for example, if someone wants alcohol they'll get it no matter the enforcement. threats only induce rebellious attitudes. also, patrol obviously means little to some people who are willing to fight among other things while knowing that they'll be arrested for it. there are already officers on the streets at night and it does little to discourage such things. and most importantly police can't EVER patrol everywhere. true criminals will wait til there is noone around in alleys anyway. so perhaps more effort should be put into solving these crimes than causing new ones w/ threats."

"Too many cops on foot may push people to try to drive and I would rather if people have been drinking that they walk."

Crown Victoria's can only go in so many places

"On campus, I'd like to see officers ensuring the safety of people returning from the library or uptown."

"I work uptown on friday and saturday nights, and I dont see as many cops uptown as I would expect"

"there are too many police officers cluttering the already crowded streets as it is. They cause more accidents when people see them and are worried about any little thing they could be pulled over for."

" There is no need for more cops on campus. More cops need to be around the drunk people uptown, and when people walk home at night. Spring street is not very bright at night. There needs to be more street lights or brighter ones."

"I would like to see less focus on things like parking tickets on a campus where this is already a problem, and more enforcement of keeping drunk drivers off the road and more serious issues" I see many more vehicle patrol than bike.

## Appendix Q

### **General comments about the Miami University Police Department:**

"I have always seen the university police officers act very professionally and sensibly, and this helps create a comfortable and trusting relationship between officers and students. I hope this will continue"

"I would like to see the department more focused on patrolling to prevent crimes, more aware and observant in the occurrence of assaults, and less in minor issues such as parking and traffic."

I am glad that the MUPD and OPD can work together on the weekends

I believe there is too much traffic enforcement

Thanks for helping out the college and caring for the students

Thanks!

Great job so far. I feel exceptionally safe.

"Your all doing a great job, my above comments are the only concerns. My best friend was killed by a drunk driver when I was younger, so I know as well as anyone the importance of safe drinking and those who drink and drive SHOULD be punished. But, we are college kids trying to have fun, we just need to remember to do our part as well by being respectful and responsible!"

"You guys do a great job, but even more work needs to be done to lower the problems with drinking on our campus."

"I think it is great that we have such a dedicated police force on our campus. Many of the students at Miami University have no idea what it really means to live on their own, and it should give them a big sigh of relief to know they have the MUPD there in case they ever get into a dangerous situation."

Keep up the good work! I'm glad you're reaching out for feedback.

" I think it is important to realize Oxford is a college town. It would be nice to keep in mind students can have responsible fun as well. Punishment for infractions of the law should be appropriate for the level of incident occurred because in all honesty, a warning or a run-in with the police once scares most people to address his/her behavior without terribly harsh punishments. Friendly officers who can relate with students is also much appreciated by all."

" I have worked with many police officers from many different departments during the summer and school year, and MUPD's officers have always been above average."

"Overall I just think Miami police worry way too much about underage drinking with students when it's going to happen at a college no matter what they do so they should start worrying more about things like break-ins and rapes and things like that."

"Every officer that I have ever come into contact with has been more than helpful and very courteous. I know that the MUPD catches a lot of crap from students, but I think that, for the most part, you guys are a very helpful and considerate group of people."

They are great

"The Miami police dept is a little too concerned with students smoking marijuana, enforcement should be a little more lenient."

"The police department further enhances the community at Miami and makes me very happy with my choice of school to go to because I feel so safe and protected."

Thank you for all that you do!

"I think less time could be devoted to finding people that are committing parking violations as opposed to other bad things that are happening. People are getting in fights, rooms are getting broken into, girls are getting raped or assaulted...but any time there is a car parked in violation, there is someone patrolling to issue a citation. Where are the officers that could be patrolling around the dorms late at night when drunk kids do dumb things in the dorms and people get seriously hurt?"

"I have worked with members of the Police Dept through various experiences and have very much appreciated the work of the MUPD. I think our department has an excellent conscious about maintaining authority, while being helpful and resourceful for the students."

I think they are doing good

Your officers were very polite

"More officers need to patrol parties uptown on foot. However, the department will never do this because they seem to be primarily concerned with university damage control and public opinion than criminal behavior. Everyone knows that there will be more incidences of arrests if the Miami University Police decided to patrol on foot, thus creating the double edged problem: it would help the student body, but hurt the school's image. What will you decide?"

"I believe that they have done a very good job but I do feel that they stress over the under age consumption a little too much. This is not from personal experience since I don't drink for religious reasons but many of my friends complain about this and they handle alcohol responsibly."

(See above statement on question #4)

"I haven't had any real encounters with the Miami Police, but I do like seeing them around campus when I have to walk from the library etc to my residence late at night."

"I like the e-mail's we receive dealing with the crime alerts. I like to know what is going on and what to look out for."

Work on relations.

"You guys gave me a ride to the Rec Center once during the winter when I was on crutches!  
Thank you MU Police Department!"

"I believe less time needs to be spent patrolling campus in the late late hours of the night and early morning but more time needs to be spent patrolling during the early evening when it is just starting to get dark and there are less people around campus."

none

"Drugs are a pretty big problem on campus...not just marijuana but also the harder stuff...aka cocaine"

"On a more sarcastic yet perfectly serious note, maybe you can give advice to the Oxford police on professionalism and how NOT to indulge in abuse of power"

" We go to a party school, we have 1 street full of bars, we have frat houses, why enforce something that has been laid down for us by the school and the community. We should be allowed to have fun in a place with limited fun capabilities"

"They are amazing at calls for issues at the dorm. As an RA I really appreciated it when they made my job easier. They were always prompt too."

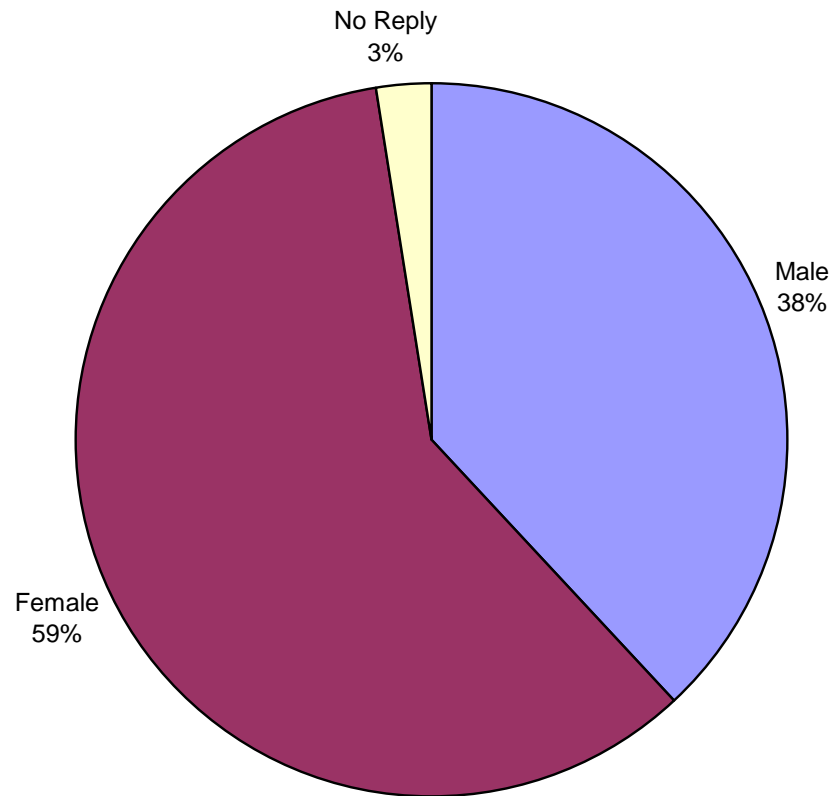
"They care far too much about bringing in money through alcohol and parking violations rather than actually making the student body safer."

"I'm not saying to not do your jobs, or let people who are guilty get a free pass, but the measures currently being taken by the police are unnecessary and in some cases unlawful. Search without probable cause, unless probable cause is four guys walking down the street after midnight. The amount of police activity is much higher than what is needed."

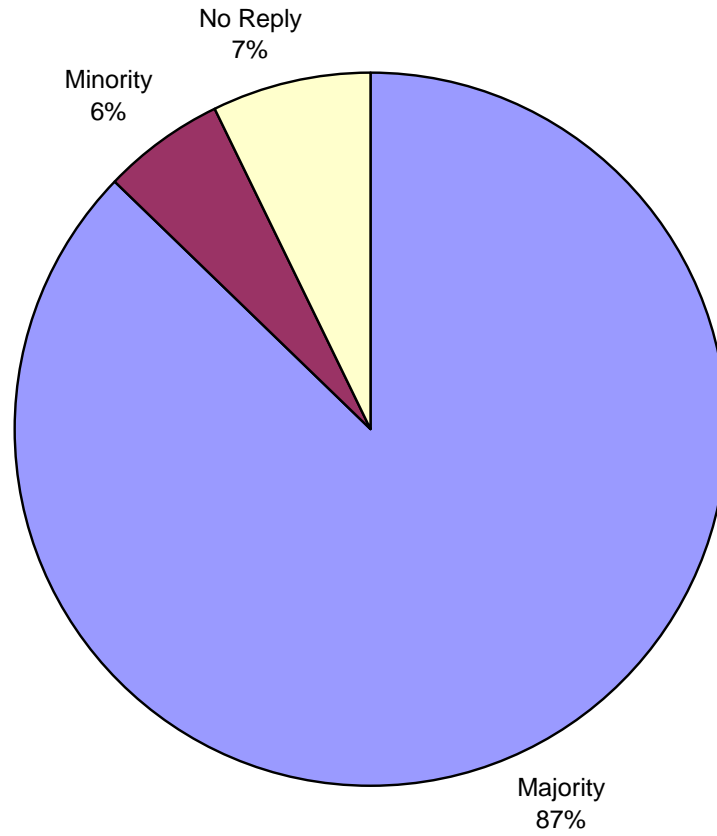
" A lot of people I know don't know the difference between Oxford and Miami Police (ie, who to contact for what, who has jurisdiction over what, etc.). Perhaps the departments or the university could issue some communication to clear this up"

## Appendix R

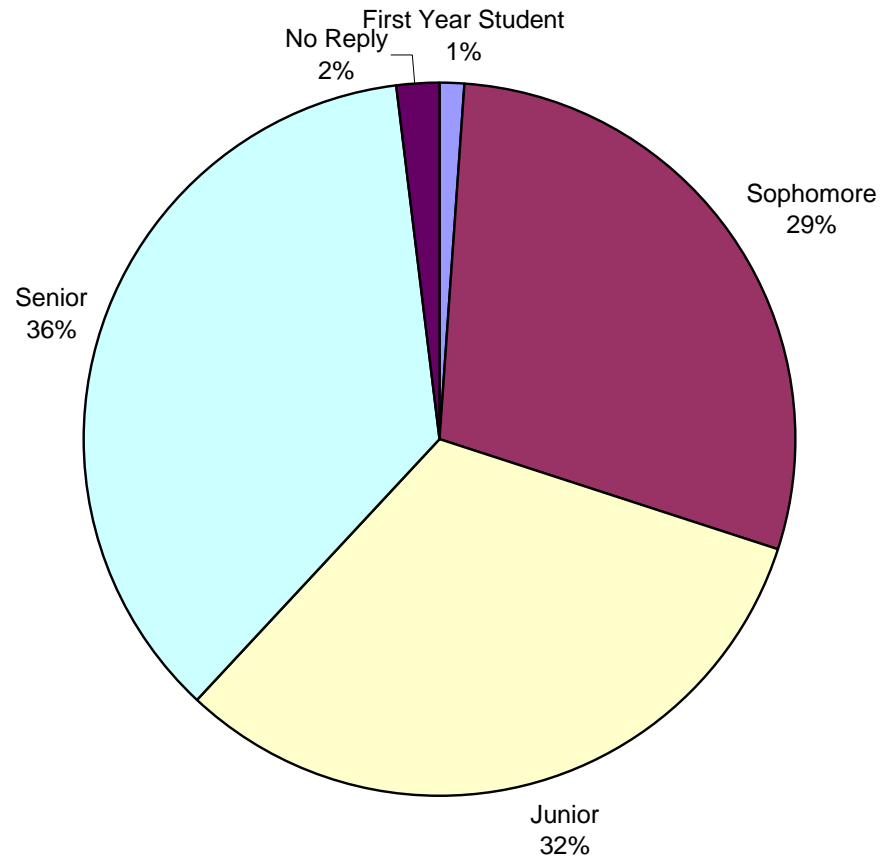
### Reported Gender of Respondents



### Reported Race of Respondents



### Reported Class Standing of Respondents in Fall 2007



**Reported Residence During School Year of Respondents**

