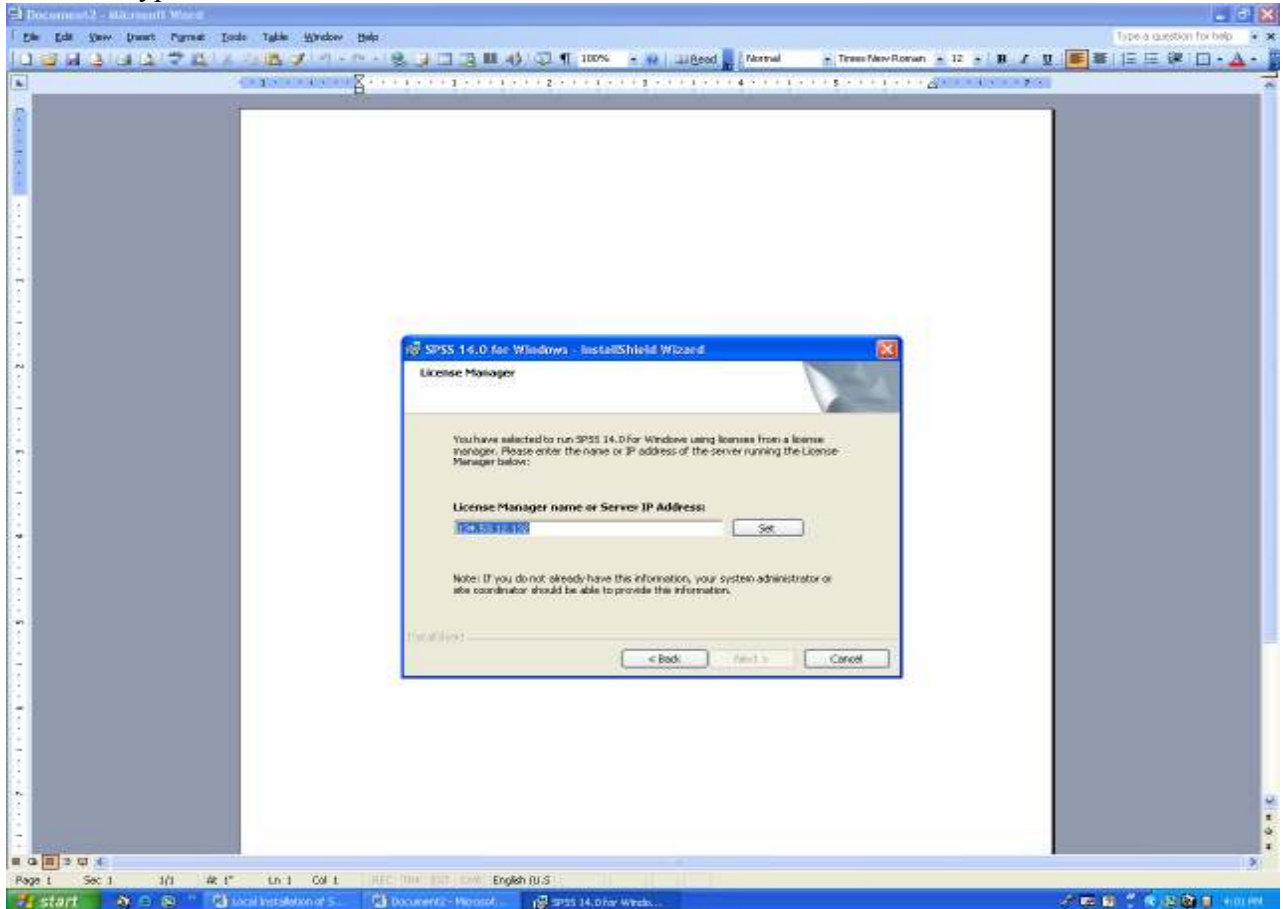


## Local Installation of SPSS 15.0

Borrow a copy of the SPSS 15.0 CD. This can be arranged through your TSR or by contacting Jon Patton ([pattonjm@muohio.edu](mailto:pattonjm@muohio.edu)). A full install can be easily done by the following:

1. Insert the CD in the drive.
2. Select **Install SPSS** from the initial menu. (if autorun is not active, click on **setup.exe** from the root directory of the CD).
3. When prompted for the type of license, select **Network license**.
4. When asked for **License Manager name or Server IP Address**  
Type 134.53.12.132



5. Click Set and then click Next.
6. If you have SPSS 14.0 already installed, you can still install SPSS 15.0 if you wish to keep version 14.0. By default version 15.0 is installed in a different directory. Note that support for SPSS Version 14 will cease July 2008.
7. After the installation is completed, it is optional to register the product online.