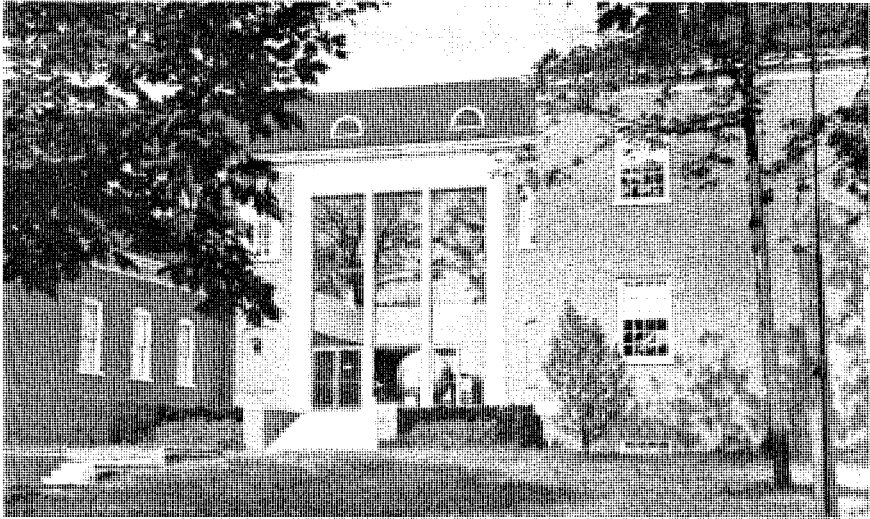


The Shideler Shibboleth



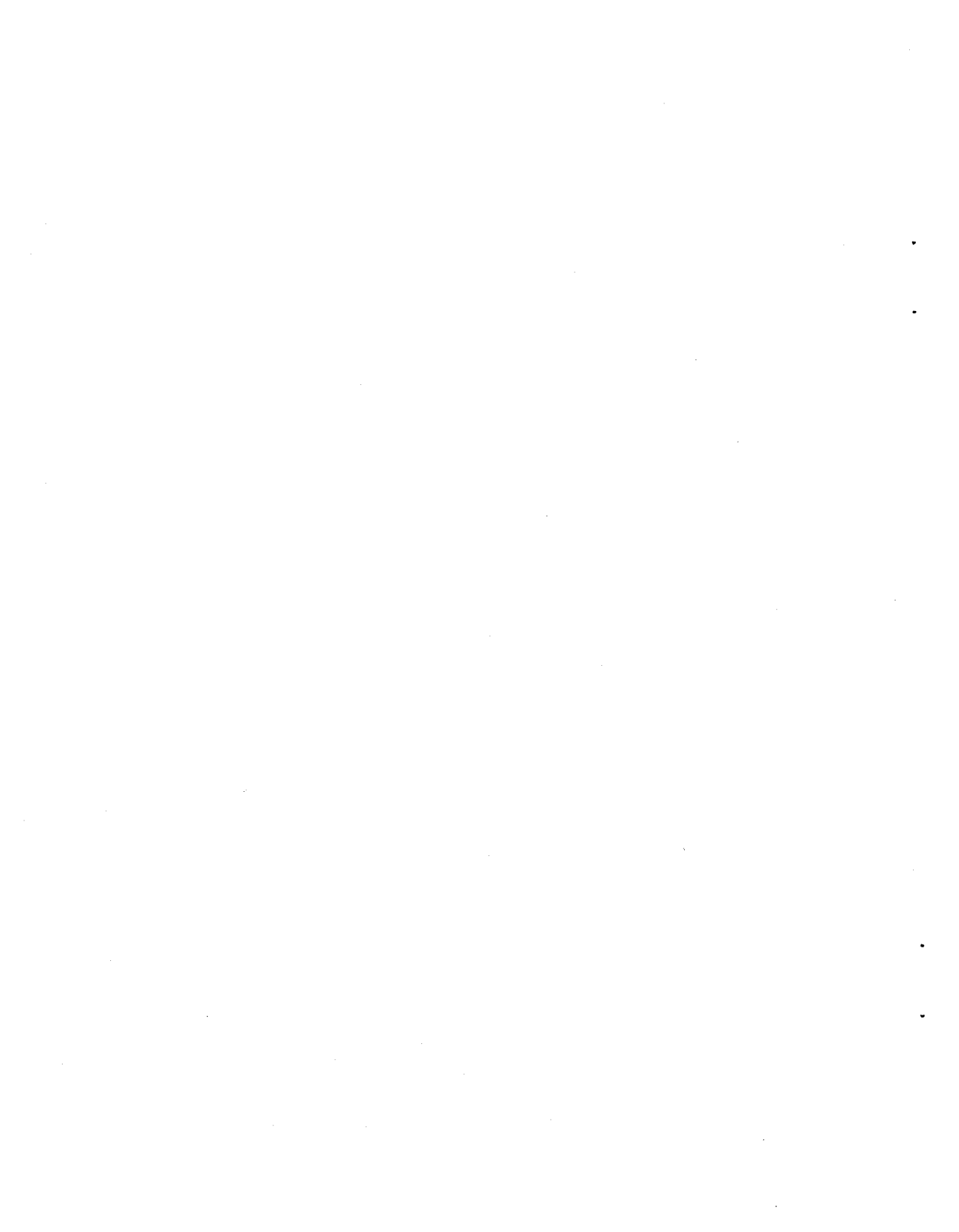
ALUMNI BULLETIN
DEPARTMENT OF GEOLOGY



MIAMI UNIVERSITY

No. 31
1982

OXFORD, OHIO 45056



FROM THE CHAIR OF THE (ED'S) DESK

Well, here we are again but this time as the longest retired(?) faculty member I'm in the enviable position of welcoming one of your former teachers into the hallowed realm of emeritus. You all wouldn't guess who it might be but it's D. Perry Stewart, familiarly known to many as "Uncle Perr".



Young Perry on his arrival at Miami.

DAVID PERRY STEWART was born March 14, 1916 in Summersville, West Virginia, the same town in which he completed grammar and high school. During these early years, he was quite active in the 4-H Club. His first two years in college were at Oklahoma A. and M. (now Oklahoma State), but he then transferred in 1938 to West Virginia University and earned his A.B. degree in geology.

Perry started his teaching career at Nicholas County High School at Summersville in 1939 teaching chemistry, physical geography and general science. This initiation to his career was interrupted in 1942 when he joined the U.S. Navy and for the next three and one-half years he served as a communications officer aboard a convoy ship and then on Guam.

After World War II, he started graduate work at Michigan State College (now a University) completing the M.S. degree in 1948. He taught in the Physical Science Department at Michigan State from 1946 to 1949. He actually started teaching geology at Marshall College (now a University) in 1949. Perry took one and one-half years out during 1952-1954 to complete the Ph.D. degree at Syracuse University.

Stewart came to Miami University in the fall of 1956 to teach physical and historical geology, a one-year course in economic geology for non-majors, structural geology and to start a sophomore course in ground water geology (Limper who was then department chairman taught geomorphology). His teaching schedule slowly but surely evolved until he eventually taught his favorite courses -- glacial, geomorph and regional. The ground water course was elevated to the 400/500 level for graduate students. Somewhere along the way a graduate student wanted to do a thesis in ground water -- then it was time to get Dwight Baldwin. Economic geology for the non-major died a natural death.

Perry started glacial geology research in Michigan (Cadillac region) where he did his Master's thesis and mapped two and one-half counties for the Michigan Geological Survey (1946). While at Marshall, he worked on the low-level lake sediment (lower than the Teays deposits) in the Ohio Valley. His Ph.D. dissertation work was in the Watertown area of New York where he joined Paul MacClintock (1954) and they mapped the surficial deposits of the St. Lawrence Lowland for the New York Geological Survey.

Stewart started the surficial geology map of Vermont in the summer of 1956 and worked on that project for eleven field seasons. Later, after the

map had been edited and a report written (1970), he returned to Vermont to spend five more summers doing environmental geology research.

Perry states that 1956 was a "big" year for the Stewarts. When the semester ended at Marshall, they stored their furniture and went to Vermont. In September, they returned to Huntington, picked up their furniture and moved to Oxford.

Everybody knows that Stewart and his graduate students have been working on the glacial geology of S.W. Ohio for the past 25 years. The work, slow at first, has gradually increased. He hopes to publish a report on the region in the future.

Nelle and Perry will be celebrating their 39th wedding anniversary 27 Oct. '82. They met in Summersville, W. Va., where both were teaching at Nicholas Co. High School. Nelle, a W. Va. U. graduate, taught Vocational Home Economics and Perry taught science.

Daughter Debbie and husband, Richard Huser, reside in Springfield, Ohio. Their other daughter, Lynn, husband Roy Mullins and daughter Leah, 4, live in Merrit Island, Florida.

The Stewarts plan to keep "home port" in Oxford. They will do some traveling, spend some winter months in the south and live it up.

ROY REINHART, "Rocky" to those who wish, is also retiring before next year but our chair suggests we withhold any delicate notes on his illustrious career for the next issue so we'll comply with his good wishes.

Your editor received a delightful letter from E. Bennett Owen, M.U. '32, and in his letter he asks a forthright question: "What's the connection of Shibboleth with Dr. Shideler?" To answer his question I went to Dave Scotford, who is responsible for the alliterative title. He told me that this came about with the move from Brice to Shideler Hall. So, when Brice Hall Breeze was no longer appropriate, the new title was born. Dave further asserts the dictionary meaning "any phrase considered distinctive of a class or faction" defines the use made of this periodical.

Mr. Owen goes on to recall, c.1931, that he "came upon Dr. Shideler standing, becalmed and entranced, between Bryce (sic) Hall and Tobey's Fountain. With rapt glee he was gazing into his upturned palm. Hearing my steps, he looked up. 'Owen,' he exclaimed. (I hadn't even supposed he knew my name). 'This is the first time I ever saw a toad defecate!' With equal care for both toad and (its) deposit, he strolled on his way."

Mr. Owen, we could use a few of your petosky stones in our labs. Many thanks for your offer and for your anecdotal reminiscences. We do hope you were able to attend your fiftieth alumni reunion.



Retirement time. Provost C.K. Williamson wishes Perry well.

We're sorry not to be able to give you pictures of the two new faculty but perhaps we can do that in the following issue.

Here's a "pic" from out of the past contributed by Bill (A.B.'42) and Lane Peters. This is the Class of 1942 after commencement at the entrance to Brice Hall at 12:45 p.m.



From left to right:

Bill Brinker,
Ken Lautenschlager, John Brand,
Bill Williams, Ted Murray,
John Metzger, Dean Kelly,
"Doc" Shideler, and Bill Peters.

Our continuing thanks to those who have helped us to locate a number of our "lost" alumnae and alumni.

Especially we all wish to express our heartfelt thanks to those who, in aggregate, contributed over \$3,200.00 to the W.H. Shideler Memorial Fund. Some of the new departmental acquisitions that Dwight mentions in his notes, to follow, came because of these funds; the publication of this "rag" is underwritten by monies from the Fund.

ALL DONATIONS TO THE MIAMI UNIVERSITY FUND CAN BE DESIGNATED
FOR THE SHIDELER FUND AND ARE TAX DEDUCTABLE

ADVERSE-TEASE-MENT

We have developed the ultimate and newest storage system for the preservation of your fresh(water?) fossils. Write us for a full brochure describing our complete earth-safe system. Everything is ecologically fail-sure.

Agassiz Refrigeration Systems, Ltd.
12,000 Wisconsin-Nebraskan Blvd.
Monadnock, New Hampshire 03222

One of our customers, Professor Reinhart, writes:

"This equipment has kept my mermaids from getting overheated." He further noted, "Many are cold, but few are frozen." And finally he rued, "There's no love like an old, cold love." A.R.S. Ltd., comments, "There's no love lost here!"

FROM THE DESK OF THE CHAIR

As was the case last year, the 1981-1982 academic year saw many changes in your Department. Of the bitter-sweet variety was the decision of Perry Stewart and Roy Reinhart to retire full time. Nelle and Perry seem to be revelling already in their new-found freedom as evidenced by their large and manicured garden and their travel plans for the coming year. Roy so much enjoyed his one semester off this year, that he decided to retire full time. Betty and Roy hope to spend most of their summer on a small lake in Canada and winter between Oxford and Sanibel Island, Florida.

When Jim Bever got word of the fine time Roy was having on the "early-retirement" plan (one semester off teaching per year), he decided he also would go "half-time". Plans now call for Jim to be off the Fall Semester next year.

The large gaps left by Perry's and Roy's retirements have been filled by 2 new people. The first is Larry Mayer who will take over Perry's teaching responsibilities. Larry is a quantitative geomorphologist with an A.B. in 1974 from Queens College and M.S. in 1979 from the University of Arizona. At the time of this writing, he is putting the finishing touches on the Ph.D., also from Arizona. Larry went to the University of Arizona to specialize in tectonic geomorphology and while there has earned a minor in statistics. His dissertation topic, The Impact of Lithologic Variation, Recurrent Movement, Multiple Scarps, Stochastic and Measurement Error on the Systematics of Morphologic Age Estimation of Normal Fault Scarps, has required careful field work as well as computer-statistical analysis in the laboratory.

The second void will be filled by James Carl who will be taking a sabbatical from the State University College at Potsdam to teach half time and to work with Norman Grant and his students in the Adirondack Lowlands. Jim will be bringing his wife and four boys with him to Oxford, and we look forward to their year's sojourn with us. Jim earned his Bachelor's degree at the U. of Mo. Eng. Coll. and his M.S. and Ph.D. at the U. of Ill. His 20 years' teaching experience includes Central Mo. State College, Ill. State U. as well as Potsdam since 1968.

This has been a year of major curriculum revision at both the graduate and undergraduate levels, for a review of academic programs was long overdue. With respect to our undergraduate offerings, we have strengthened our requirements to reflect the current needs of our students. To summarize these changes, we have eliminated 2 hours of paleontology and 2 hours of crystallography in order to add 3 hours of optical mineralogy and 1 hour of X-ray powder diffraction methods.

At the Master's level, the faculty decided that our students need to have a wider classroom exposure to the faculty of the Department. Certain students, particularly in the "soft-rock" area, were taking almost all their formal instruction from only one or two professors. The faculty voted, therefore, to adopt a Course Distribution Policy which will require students to select at least one course from a minimum of four major categories in Geology. Not only will this give students a greater exposure to faculty, but also it will assure that they receive a minimum breadth of geologic background.

The Department also voted this year to institute a new non-credit seminar series for all incoming graduate students. This "hands-on" seminar

will be given weekly in an informal setting over the lunch hour and will cover at least the following topics: (1) an introduction to statistics commonly used in geology, (2) a series of computer programming exercises that will show the usefulness of computers in geology, (3) an introduction to the use and care of drafting equipment and (4) an introduction to the use of photography in geology.

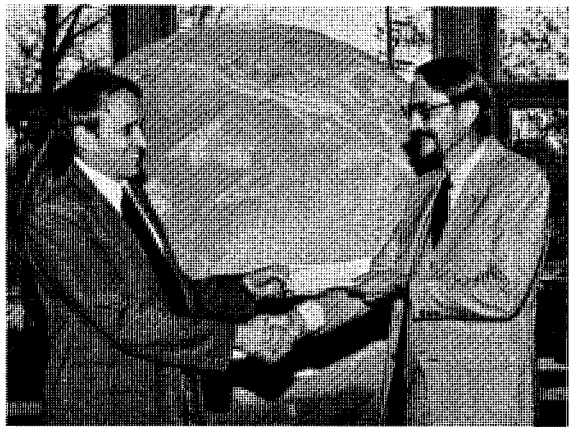
Four formal overnight field trips were organized this year. Two were led by Dave Scotford. The first of these, last Fall, took students across Appalachian structures of Pennsylvania, West Virginia and Maryland. Secondly, he led a trip this Spring to see the structures of the southern Appalachian Mountains in Tennessee. A third trip, led by Wayne Martin, studied the stratigraphy and sedimentology of the geologic section as it is exposed in southern Ohio. Perhaps the most exotic, however, was the Andros Island, Bahamas trip, run for the third time during Spring Vacation and led by John Pope, Dave Scotford and Mark Boardman.

This has also been a good year for dollar support of the Department. A total of \$150,899 was generated from external funding sources (The National Science Foundation, American Chemical Society, The Research Corporation and the Department of Energy). This sum reflects the scholarly growth and vigor of your Department.

Financial support was obtained from both external (including your gifts to the Shideler Fund) and internal sources to purchase the following major equipment: (1) a new atomic absorption spectrophotometer, (2) a single-crystal laboratory, (3) a Zenith Z-89-0 microcomputer with a daisy-wheel printer and dual 8-inch floppy disc drives, (4) a 15-passenger van for transportation of students in Wyoming, (5) four Nikon binocular petrographic microscopes, (6) a Nikonos underwater camera, (7) a Keithley amplifier for the Rb-Sr mass spectrometer, (8) an IES Centra centrifuge, (9) an A-O binocular zoom microscope, and (10) a substantial addition to field station equipment.

Both undergraduate and graduate enrollment remains high. In fact, the 52 Master's students registered for at least 1 hour of credit last Fall are more than we can easily handle. This is particularly true of those wishing to work in the "soft rock" area.

This year has thus been a good one, for we have strengthened and improved most every aspect of our program. All this has come about through a cooperative effort of many people and we are most appreciative of the support that many of you have provided this year and in the past.



Bill Bishop (A.B.'54; M.A.'57)
gives a Tenneco check to our
Chairman.

FACULTY AND STAFF NEWS

Dwight Baldwin has his words under "the Desk of the Chair" but everyone ought to know that we do have a most worthy successor to Dave Scotford; the department remains a smoothly running, active and congenial group under his guidance.

Jim Bever is now savoring his impending "early retirement" so much that your editor, in late June, had to remind him that his notes for the S.S. were due before June 1st. Jim responded to my subtle prod by saying, "I could have sworn this is still May." He goes on to report in his inimitable style which comes unedited to you: "Rather than the routine things to report, I'm trying to get things in order for the August early retirement, and finding it extremely difficult to discard any of the garbage that I've accumulated through the last XX years. A move into Reinhart's office on a shared basis is being facilitated. Naturally, once there, I will start applying eviction procedures against him -- no doubt just as successfully as our department has applied them against Geography through past years. I do expect to travel to Montana to visit a student in July, and also am scheduled to teach in the second semester of 1982-83."

Mark Boardman, having finished only his first year on our faculty, has been able to take your editor's old office and convert it into a neat, orderly and most inviting, 'though business-like, office and that's no mean accomplishment in itself. Added to becoming acquainted with Miami's ways, getting his courses running, inaugurating a weekly series of films for beginning students, serving as one of three guides (chaperones?) on the Spring Break field trip to Andros Island, Bahamas, Mark presented a paper at the 1981 meetings of the G.S.A. in Cincinnati as well as being invited for guest lectures at both the U. of Cincinnati and Bowling Green S.U. Then, during the 'tween-semester break (Jan. 7-20, '82), Mark led a 2-week research cruise to the Bahamas waters aboard the R/V Cape Halteras. Three M.U. graduate students were on the trip, too, among a total of twelve scientific personnel. The research concerned deposition of CaCO_3 in near-platform, deep-water environments.

Norman Grant, during the second semester, took over the teaching of the Geology of the U.S. National Parks, which for that semester became known as the Geology of the National Parks of the Colonies. This experience gives Norman teaching contacts at all levels. Along with the teaching responsibilities, Norman is currently supervising 3 Master's theses, and dissertational work of 3 of our current 6 doctoral students. The course, Geochronology, he has expanded to include more activity in developing numerical skills in isotope geology. Two recent papers on strontium geochronology dealing with Mississippi Valley-type mineralization and the Duluth, Minnesota complex are 1981 publications, 3 other papers have been submitted for publication and two papers were given at the G.S.A. '81 meetings. Norman accepted an invitation to the May 1982 Penrose Conference dealing with the hydrodynamics and geochemistry of ore generation in sedimentary environments. He has also been commissioned to review 2 proposals for the N.S.F. and act as reviewer for an American Mineralogist paper and appointed to the Editorial Board of the Journal of African Earth Science. The campus service activities we can list for Norman include the drafting of our departmental tenure and promotion criteria and procedures, and the introduction of incoming graduate students to departmental facilities and

research interests. In October '81 he attended and reported on the "Forum on Manpower Needs for the '80's for the Geosciences" held at O.S.U., Columbus. Close to \$23,000 of research funding has been garnered by Norman during the past year.

Martha Hickman seems to have become more deeply involved in motherhood because she has declined to give your editor more direct news than that Florence is taking up increasing time for her. Nevertheless, we do see her frequently at the building involved with her research activities so there's much still going on in geologic discovery in spite of her apparent reluctance to share.

John Hughes gives the following report of his first year in the department. "In the past year I have, first and foremost, survived my first year of college teaching! Research activities have included setting up a single crystal X-ray laboratory with funds I obtained from a Research Corporation grant, and continuing my work on new high temperature fumarolic vanadate minerals. Last November I gave a poster session at G.S.A. on these compounds. A paper was published in the Carnegie Institution Yearbook (with Larry Finger and Bob Hazen) describing the crystal structure of the new mineral bannermanite. Several other papers on these compounds are in press or in review. I am now supervising two theses which are nearing completion and hopefully will appear in the literature within a year. Lancy Yau is investigating phase relations in the Li spinels, and Bill Zhong is examining the response of chlorite to metasomatism. These have been my first experiences on the other side of the "adviser's desk," and, I might add, both students have been a joy to work with!" Your editor, who must traverse radiantly through the X-ray lab can report from first-hand experience that Room 104 is a "hot" bed of activity the year 'round.

Karl Limper wishes to report that there's nothing wrong with retirement. He seems to have more diverse things to keep him moving a full day at a time. Early in March '82, Betty and Karl visited, explored, by car, plane, boat and foot, Tahiti, Australia (including the Great Barrier Reef), New Zealand and revisited Kauai, Hawaii returning late in April. It was great for geology and Betty was most enduring and tolerant. We'll drop a few names of "old" Miamians who were seen attending the Nov. '81 G.S.A. meetings: Serge Gonzales, Lisa Hakkio, Bob Henniger, Bill Kneller, Gloria and Sandy Ludlum, Tom Maher, Lane and Bill Peters, Betty and Bob Radabaugh, John Shade, John Thoms and Dick Vian. There certainly were others but if those omitted will excuse the weakening memory and failing eyes and ears of your editor, we'll try to be more inclusive. On Karl's final field station summer the oldees who made the trek to Dubois during the 2nd term included: Dick and Evelyn Church and daughter, Jody, Steve Dennis, Tony McAloon, Dave and Sheila (Murray) Nielsen and Eral (Reese) Sutton (who left a wonderful catch of Rocky Mt. trout). Also your ed. had the treat of a sumptuous ranch dinner at the Highland Meadow Ranch recently purchased by Dave Delo and Diana Watson, son and daughter-in-law of Dave (M.U. 1926) and Sunny Delo. Dave and his wife were visiting there so we older ones had a great time reminiscing about Wyoming and Oxford in the earlier days.

Wayne Martin, as President of the GLS-SEPM (81-82), participated in the field conference on the north shore of Lake Ontario last fall. The field trip was focused on the famous Gowganda Formation and other units of the Huronian Supergroup. This trip was a very rewarding experience. In November he attended a few sessions of the G.S.A. in Cincinnati. In April he presented a paper at the Hueston Woods Symposium. The highlight of the spring term was

a three day field trip with Drs. Baldwin and Boardman and 16 graduate students to eastern Ohio. We anticipate a larger enrollment than usual in the Wyoming field courses this summer. Wayne jockeyed the old I.H. truck along with several other departmental vehicles for the first term. From recent news out of Dubois the I.H. truck will become another departmental retiree provided it can make it through the summer and return to Oxford. If not, and death should overcome the venerable vehicle, I'm (Ed.) sure a suitable burial service will be held upon Boot Hill, Dubois.

Bob McWilliams reports "I served as publicity chairman for the 1981 Annual Meeting of the Geological Society of America in Cincinnati last November. I plan to do field work in Wyoming this summer as part of my current research. I will teach second term of field geology afterwards at the ranch."

John Pope has held away from reporting for the newsletter this year. Campus and family activities, we would judge, are much as his previous newsy contributions have "chronicled."

Roy Reinhart was so excited about his late-in-the-year decision to retire fully that he had given no thought to anything other than getting his former office vacated for later use by himself, Jim Bever and Perry Stewart and then followed by a dash to the Reinhart summerplace on the shores of a quiet, peaceful lake in Ontario. We did see him momentarily following Alumni Weekend, to which he had come for the 40th Class reunion, to remind him of his contributory obligation to the Shideler Shibleth. The office clearing-up was given full time before his return to Canada, however.

Dave Scotford has all the following exciting and time consuming activities to review his year which we quote: "Again a year of many trips -- to Wyoming in the summer of '81 to start three Master's students on structural mapping theses in the Gros Ventre; to Georgia in November to start a Ph.D. student on a dissertation project and again in February for a Master's student; in between a G.S.A. field trip to the Pine Mt. overthrust and sailing in the Florida Keys over Christmas break with John Pope; to the Bahamas during Spring Break with 36 students and John Pope and Mark Boardman. I'll go back to Georgia in May to see these students and out to Wyoming this summer to check on four graduate students. A paper on metamorphosed ultramafic rocks in North Carolina has been submitted to American Mineralogist."

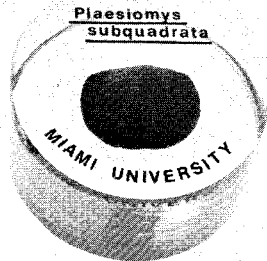
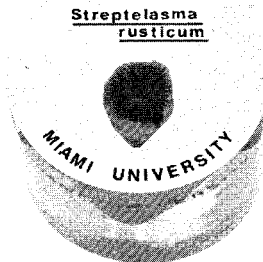
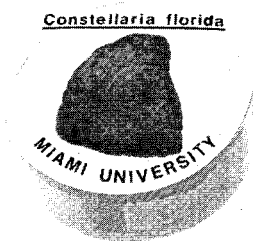
Perry Stewart was co-leader, with R.P. Goldthwait, of the glacial geology field trip preceding the G.S.A. meeting in Cincinnati last fall. He spent much of his time in September and October in preparation for the trip. Exposures had to be in good shape. It did rain early in the week of the trip, but cleared, and the trip was a good one. Perry gave a paper at the Miami University Symposium at Hueston Woods State Park in April along with Dwight Baldwin, who also read papers at this same function. He wrote a report on the glacial geology of the park area (Doty's Highbank is in the park) to be included in the symposium volume to be published in the near future. Perry says he could tell he was looking forward to retirement inasmuch as he had to keep "holding back" in his classes because he had a tendency to hurry all the time.

Joe Marak has generously taken time to prepare this contribution to the Shideler Shibleth: "Good fortune came to the museum in many forms this year. Perhaps most noteworthy was the action taken by the Board of Trustees which officially named the museum after Dr. Karl Limper. Karl's service to the Department, University, and community is well known. Perhaps not as well known are the many forms of support that Dr. Limper has lent to the museum."

Both I, and the members of the Department of Geology are very pleased that his name was selected to honor our facility. I am pleased to report that two very large gifts came to our collections this year. Mr. Ray Meyer, Port Monmouth, N.J. has donated a fine assemblage of "Crawfordsville Crinoids." Additionally, Mr. Joseph Keilbaso, Tipp City, OH, gave over one-half ton of mineral material for display and laboratory uses. Important contributions were also made by the following thoughtful individuals: Miss Isabella Williams, Mrs. Ruth Irwin, Mr. Jeff Green, Mr. Dave Giuseffi, Mr. Phil Dravage, Mr. Doug Benton, Mr. Frank Bliss, and Mr. Walter Wiseman. The Museum was the recipient of very generous support from Mr. and Mrs. Raymond Bourne, Mr. and Mrs. Jay Minich, Mr. and Mrs. Malcom Owings, and Mr. Thomas Smith. Their concern, and that of previous donors, is allowing the Museum to initiate its Computer Cataloging Program. Because the Museum has pursued funding for this program for more than two years, these enabling contributions are particularly satisfying. I am pleased to report that both faculty and students are showing great interest in this equipment, and I am satisfied that many will be served by this investment. We are indebted to many, but particularly want to acknowledge the efforts of David Lawrence and the Office for Development. Four hundred and sixty children from nine area elementary schools visited the Museum this year. In addition to these children, the Museum provided a series of demonstrations for children participating in the 1981 Summer Enrichment Program for Tomorrow's Leaders. The Museum assembled fossil and mineral suites for three institutions around the country. Some Ordovician fossils were loaned to researchers at Centenary College, Louisiana, and Southern Illinois Univ., Carbondale. Cathy Thompson, a Graduate Fellow in Miami's IES program, served in our Museum this Spring. Bob Smith, one of our graduate assistants, was assigned to the Museum and he has succeeded in converting Ohio and Indiana "Shideler localities" to grid system points. Senior geology major, Kathleen Johnson, has provided her talents for the past two semesters."

* * * * *

Joe Marak, modest as usual, neglected to mention that President Pearson, who visited and declared deep admiration for the quality of our Museum, commissioned Joe to design and execute a number of plastic paperweights which enclose representative Oxford fossils. These souvenirs are to be given to major donors contributing to the betterment of Miami.



Ph.D., MASTER'S AND BACHELOR'S DEGREES

Ph.D.

Laskowski, Thomas E., May, 1982, Rb-Sr, K-Ar, and ⁴⁰Ar/³⁹Ar systematics in Paleozoic glauconite from Mississippi Valley-type localities, and the dating of events during sediment diagenesis: Ph.D. degree. Adviser: N.K. Grant.

Master's

Hinterlong, Gregory D., Dec. '81 - Cities Service Oil Co., Tulsa, Oklahoma.
Marzano, Michael S., Dec. '81 - Geologist, Mobil Oil, New Orleans, Louisiana.
Mavris, George, Dec. '81 - Exploration Geologist, Chevron Oil, New Orleans, Louisiana.
Olson, David P., May '82 - Geologist, Exxon Oil, New Orleans, Louisiana.
Reddin, Nancy J., Dec. '81 - Unknown.
Staursky, Geoffrey N., Dec. '81 - Associate Geologist, Getty Oil, Oklahoma City, Oklahoma.

Bachelor's

Babcock, Anne E., May '82
Driehaus, Barbara A., Dec. '81
Fay, Donald A., Dec. '81
Johnson, Elizabeth A., Dec. '81
Johnson, Kathleen E., May '82
Kessler, Kirk J., May '82
McGowan, Linda J., Aug. '81
O'Keefe, Timothy M., May '82
Roberts, Lora J., May '82
Teuschler, Jerome H., May '82
Treleaven, David T., May '82
Walsh, James F. III, May '82
Weiler, Peter D., May '82
Wheeler, Jill A., May '82

* * * * *

Don Juan...caressed the ground gently.

"This is the predilection of two warriors," he said. "This earth, this world. For a warrior there can be no greater love...

"This lovely being, which is alive to its last recesses and understands every feeling, soothed me, it cured me of my pains, and finally when I had fully understood my love for it, it taught me freedom."

Carlos Castaneda, Tales of Power

ALUMNI NEWS

MARRIAGES

We would like to wish the newlyweds listed below health, happiness and prosperity; but most importantly, the best of luck!

Marty Bretz (A.B. '78) has been busy acquiring a new wife, job and address! Unfortunately, all we know about his new wife is that her name is Doreen, and that she's a graduate of Capital U., Columbus, OH. About the new job he's a bit more specific. Marty began working for Bois D'Arc Corp., Columbus, in June '81 and is involved in prospect generation in the Appalachian, Michigan and Illinois basins. From his new address of 307½ E. Columbus St., Columbus, OH 43206, Marty wishes the best of luck to Dr. Limper in his retirement! Thanks much for the wishes.

Charles Brewster (A.B. '75) to Renee Harrison of Grand Rapids, MI, a fellow geologist from S.M.U., in Aug. '80. Charlie entered graduate studies in Economic Geology at the U. of Tenn. in Sept. '80 and plans to complete his M.S. in June '82, after which he will be employed by Amoco Production Co., New Orleans. Renee is employed by Union Carbide in Oak Ridge, TN. Since we don't have an address for you, please let us know where you are when you're settled in New Orleans.

Thomas Brown (A.B.'79) has been married a year now to Deborah Derr, also a Miami graduate, and is working on his Master's at San Diego State U. Address: 6333 College Grove Way, A-24, San Diego, CA 92115. For those of you who may wish to call your congratulations, their phone number is (714) 287-3638.

Jeff Dahoda (A.B.'80) to Cindy Morgan in Jan. '82. Jeff is currently working on his Master's at the U. of Wyo., Laramie, and plans to work in O & G as well as tackling his thesis field work this summer. For that extra cash that all struggling grad. students need, he worked for Exxon Coal Resources two summers ago in Houston, and for Mobil Nofuels Corp. last summer in Denver and south Texas. Although he's run into at least 20 alums in the last two years, Jeff neglected to tell us who and where - please fill us in next time! Congratulations to the newlyweds may be mailed to Jeff at the Geology Dept., U. of Wyo., Laramie WY 82070.

Mike DeBrock (A.B.'79) to Rae Rosinski (M.U. grad.). Mike is working on his M.S. at B.G.S.U. and will finish this summer. His thesis topic deals with fossil Polyplacophorans from Texas. When finished, he and Rae will be going to New Orleans where Mike will work for Chevron and Rae hopes to teach. Mike also reports that he's seen many Miami faculty for Brown Bag lectures. Unfortunately, Mike, you gave us no address for congratulations! Let us know where you are when you're safe and sound in New Orleans.

Sara Deutscher (A.B.'80) to Forrest Earl (A.B.'80), 18 July '81. Sara is teaching pre-schoolers at Village Day Care & Learning Center in York, Maine. Hubby Forrest pays his way with a teaching assistantship at the U. of New Hamp., Graduate Dept. of Earth Science. The happy couple's mailing address is P.O. Box 477, North Berwick, ME 03906.

Larry Drennan (A.B.'77) to Dale Bowers, also a geologist. Larry and Dale went to Hawaii for their honeymoon and put Dr. Limper's Geol. of N.Ps. course to good use at Hawaii Volcanoes N.P. and Haleakala N.P.! Larry is presently Project Leader at Texaco, Inc. We'll be sending the Shibboleth he says he appreciates so much to 5911 Crestone, Golden, CO 80403.

Kathleen Gardner (A.B.'78) to "Skip" Wissinger, 4 April '81. Kathy is still working at Shenandoah Natl. Park and is living in a 1910 stone house at the South District Ranger Station (Skip is the protection supervisor). She took a 2 week trip to Boston and Acadia Natl. Park in Sept. '81, saw old friends and "maxed out" on lobster. She has also developed a small business in commissioned weaving, saws and chops wood for the wood stove, and cans vegetables for winter. Besides all this, she somehow managed to find time to give some informal programs for local colleges on NPS ethics and Shenandoah and is keeping her hand in interpretation a little. Kathy has shared her philosophy with Limper and he's prepared to accept her invitation for slides if needed. She's also ready to edit the reprint of the Park Guide that she wrote last year. Address: Rt. 3, Box 311, Elkton, VA 22827.

Ann (Graetsch) Harris-Noel (M.S.'58) to Charles Dale Noel, 27 Dec. '80. The union doesn't seem to have cramped her style any! She was the recipient of the Jefferson Award for "Outstanding Public Service Benefiting Local Communities" on the local level, and was one of 14 contenders at the national level. On 26 May '81 she received a bronze medallion in a special ceremony as well as a commendation from the State of Ohio House of Representatives. She also had an exhibit on display (Sept. '81 to Jan. '82) at the Arms Museum (Mahoning Valley Hist. Soc.) entitled "Pick & Shovel History", plus slides and other records on the abandoned deep coal mines in the area. The address of the happy couple: 3320 Flo-Lor Dr., #12, Youngstown, OH 44511.

Elizabeth Ann Johnson (A.B.'81) to Joseph Mauch (A.B.'80), 2 Jan. '82. Liz worked in the Remote Sensing Center at T.C.U. interpreting landsat images while Joe finished his Master's there. He then started work at Getty Oil in Houston on June 21 as an Exploration Geologist, and Liz will begin work on her Master's at Rice U. in late August. She hopes to concentrate on Plate Tectonics/Structural Geology. Before the move to Houston in June the newlyweds finally took their honeymoon, camping in New Mexico and Arizona. Shine on, desert moon... New address in Houston: 5402 Renwick, Apt. 893, Houston, TX 77081.

Stuart Kelly (A.B.'76) to Shirley Alice Jones, 14 July '82. As far as we know the home address is still 2545 N. Maryland, #212, Milwaukee, WI 53211.

Gary Pagan (M.S. 'ex '77-79) to Laura J. Ison (M.U.'81) on 3 Jan. '81. Gary is now with Tenneco Oil as a Geological Engineer, and they've bought a new house north of Houston. Address: 5927 Theall, Houston, TX 77066.

Arthur Schnacke (A.B.'79) to Barbara Elliot (M.U.'79), 14 Nov. '81, in Cincinnati. Art completed his M.S. at the U. of N.D. in March '82 and began work as a Production Geologist for Exxon in April in the Harvey District. Art and Barb's new address is 4430 Maple Leaf Dr., New Orleans, LA 70114.

John (Curly) Thompson, III (M.S.'80) to Julia Kring, 20 Feb. '82. Curly is a Geologist for Exxon and reports he's still enjoying working in Production Geology in the Santa Barbara Channel-Monterey Formation. His business address is Exxon Co., USA, 1800 Ave. of the Stars, Room 1039, Los Angeles, CA 90067.

Curly and Julia's home address is 388 E. Wilbur Rd., Apt. 203, Thousand Oaks, CA 91360. When your expected transfer to the Gulf Coast this fall comes through, please let us know your new address!

BIRTHS

The following happy couples are the proud owners of the new 1981-82 models of Beautiful Bouncing Babies. May the teething be easy and the naps be long, the illnesses short and the parents strong.

Bob (M.S.'76) and Cathy (M.U. 'ex '76) Frey: a daughter, Carrie Elizabeth, born 27 May '82, 6 lb., 9 oz. Bob writes that "She took us by surprise and decided to come a week early - the little stinker! Mother and daughter are doing fine, father is still in recovery." Bob is an instructor at Centenary College of Louisiana in Shreveport. Home address: 2903 Bolch Dr., Shreveport, LA 71104.

Dick (M.S.'80) and Kathy Opalka: a son, Kevin, born 17 Jan. '82. Dick is a Geologist with Sabine Production Co., Two Allen Center, 1200 Smith, Suite 350, Houston, TX 77002. Dick, Kathy, the new baby and sons Matthew Aaron and Phillip are residing at 3814 Bear Lake Dr., Kingwood, TX 77345 and welcome contact from anyone in the Houston area.

Harold (A.B.'78) and Cheryl Orndorff: a son, Aaron Charles Raymond, born 23 Sept. '81, 7 lb., 5 oz. Not only that, but Harold received a promotion at Shell's Bellaire Research Center. He reports that he spent 6 months in well-evaluation as part of the petrophysical engineering group, learning well log analysis, rock cutting analysis and well testing techniques; and 3 months working on a field study for the production engineering group. Currently he's involved with many research projects at the Research Center, including whole core analysis, S.E.M., X-ray diffraction, thin section petrography and cation exchange capacity. "Cheryl, Harold and baby couldn't be happier!" The new address of the happy family is 4122 Sea Meadow Court, Katy, TX 77449.

Ed (M.S.'78) and Jane (M.U.'77) Rothman: a daughter, Sara Eileen, born 12 Sept. '81. Ed is an Exploration and Development Geologist for Columbia Gas Transmission Corp., Charleston, W. Va. In Sept. '81 he spoke at the Appalachian Geol. Soc. meetings about low permeability reservoirs. The family is nestling happily in their home at 208 Shephard Ave., South Charleston, W. VA. 25303.

Jeff (M.S.'79) and Margaret Williams: a daughter, Jessica, born 2 June '81. Jeff, having moved from Utah, is now Chief, Branch of Energy and Minerals, Bureau of Land Management, Eastern States Office, Alexandria, VA, and the family is now at home at 6709 Hopewell Ave., Springfield, VA 22151. The phone # is (703) 642-5390. Let us know how the new job works out, Jeff.

Frank (M.S.'70) and Kay Wright III: a son, Frank M. Wright IV, born 24 Nov. '81. Frank is continuing an active exploration program in the Western Sirte Basin of Libya as a geologist with Mobil. Kay and oldest child, Sara, were "evacuated" in late Aug. '81, sent to London and eventually Stateside following the "Gulf of Sidra Incident." They stayed with Kay's parents in Dayton and Sara is going to 1st grade there. Frank flew home in time for the Big Event, however - "a wonderful Thanksgiving present."

IN MEMORIAM

Richard Foell (A.B.'56) died August 25, 1981, following an extended illness. We extend our condolences and sympathy to his wife, Norma (George), sons, Joseph and Philip, and daughter, Ruth Ann.

NEWSY NOTES

David Allen (A.B.'80) has finished Dresser Atlas' well-logging school and is now enjoying his job as a field engineer for Dresser in Shreveport, LA. After moving 3 times last year, David and wife Teresa hope to stay put for awhile! Their new home address is 8501 Millicent Way, #2143, Shreveport, LA 71115.

Bernie Baker (M.S.'64) visited Oxford and the Miami campus mid-summer '82. He reports that the M.U. contingency in Austin is flourishing. His son, Lawrence, has just finished the first year at U. of Texas, Austin.

Chet Baker (A.B.'47) gives this news: "I moved from Chicago to Houston last year and now am assigned to a Basin Analysis Group, Central and South America - Far East Region, working with geophysicists, engineers and economists in the evaluation of new areas for exploration. Would appreciate hearing from fellow (or female) graduates with suggestions on the location of potential multi-million barrel oil fields in my region." (Those with bright ideas should write to Amoco Production Co., Int'l., 16825 Northchase Dr., Houston, TX 77210). Then to ye olde editor he sent a photo circa '41 of pre-departure on a B.T. Sandefur trip. We'll hold the pic (and thanks for sending it) with the thought of running it in a future issue for a quiz pic (whoze zoo on the trip?).

Jeffrey Baker (A.B.'80) is now employed as a consultant geologist for Rebco Ltd. in the Williston Basin area. His mailing address is 1580 Security Life Bldg., Denver, CO 80202.

Susan Beers (A.B.'80) noticed in last year's Shibboleth Dr. Limper's plea for help in putting a geographic listing of alumni on computer. Sue has just purchased a "great little home computer" and kindly offered her assistance. Dr. Limper says he just might take her up on it if she's willing to bring her computer to Oxford! Sue is an Associate Programmer in Management Systems Support Group in Lakewood, Ohio, where she and husband Larry reside at 15119 Lake Ave., #105, 44107.

Raymond Blackhall (M.S.'74) is still president of Subsurface Resources, Inc. in Houston and reports that business is growing! Next year's plans include the drilling of 8 to 10 of their own wells and participation in numerous others. Bob Maurer (M.S.'74) works in the same building as Ray and says "Hi!". Ray and wife Sally are still at 17415 Spicewood Springs Lane, Spring, TX 77379. Sorry we forgot to include your visit to Oxford in last year's Shibboleth, but you must have forgotten to send us a card saying how much you enjoyed it!

Nick Beskid (M.S.'71) joined Batelle in the summer of '80 as an Environmental Project Manager. He is responsible for defining, planning and managing environmental projects and related studies directed toward providing information and/or services to satisfy all environmental requirements that support the siting, construction, licensing, operation and decommissioning of nuclear waste repositories in crystalline regions. Whew! Nick,

wife Judy and 3-year-old son Christopher are living close to Bill and Pat Rike and John and Barbara Curtis at 1692 Lynnhurst Rd., Columbus, OH 43229.

Art Bloom (A.B.'50) writes that he is still working on tectonic uplift in Vanuatu in the New Herbrides Islands but that he may start a new project in Argentina next year. (No invasion of the country, Art, please!). He also thoroughly enjoyed a recent sabbatical leave in Japan last fall - geomorphology all over the place! We assume he and wife Donna are still at 118 Judd Falls Rd., Ithaca, N.Y. 14850.

Ben Brace (M.S.'68), having completed his stint as Acting Treasurer for O.S.U., is now Special Assistant to the Vice-President for Business and Administration, and works closely with the new President helping to reorganize the University. He also somehow finds time for Boy and Cub Scouts (takes them on geology field trips!), a financial consulting business, real estate investments and the stock market. Ben finally parted with his '68 Cougar that he bought after graduation from Miami and gave it to his boys to rebuild. In his own words: "Same address, same wife, same kids."

John Brand (M.A.'47) is "Still fighting the battle of the Montana Overthrust belt and dabbling in micropaleo and palynology." His new battlefield address is 1052 Wyoming Ave., Billings, MT 59102. Last summer Limper was hoping y'all would come down to Dubois.

Greg Brendel (A.B.'80) has changed jobs and is now in Sales/Log Analysis, Dresser Atlas, Bay City, TX. Greg ran into Gary Pagan in West Columbia, TX, and reports that he is working for Tenneco in Houston after two years with Exxon. He also had lunch with Sue Retz in Houston; she is now with Kirby Exploration. Greg's new address is 19 Misty Lane, Bay City, TX 77414. Thanks for the news, Greg.

Bill Brinker (A.B.'42) has apparently run out of nasty things to say to and/or about Dr. Limper as his latest correspondence was chock-full of most uncomplimentary adjectives about John Brand (alias DOC B). Since we're basically kind-hearted folk, we'll refrain from passing them on to you. Bill did say, however, that his "most significant achievement this year" was to fill out and send us his information card. Perhaps next year he'll have something nice to say. We keep hoping. Ah, yes, he does have one more (new) grandchild, bringing the total to four.

Stephen Brown (M.S.'74) has formed Brown & Ruth Laboratories, Inc., a geochemical laboratory and consulting service for the oil and gas industry. The majority of the work concerns the evaluation of source rock potentials in frontier basins, and the company works primarily for major and large independent oil companies, although they do some government work as well (primarily foreign). Steve and his wife, Cynthia, have two children, Courtney McLean (5), and Joshua Ethan (2). All are in good health and doing fine. Mailing address: Brown & Ruth Laboratories, 10690 Shadow Wood Dr., Suite #130, Houston, TX 77043.

Don Bryant (A.B.'56), after many years of not being associated with geology, has started to manufacture oil field drilling equipment for the Evansville Division of Continental EMSCO Co., of which he is Vice President and General Manager. His son, Drew, is studying Mining Engineer Technology at Ind. S.U., Evansville. His wife, Marcia (Harrison, '59), is happily managing their small horse farm; and Don writes that they both thoroughly enjoy their equestrian activities of 3-day eventing, fox hunting and showing. We assume the family's address is still R.R. 5, Box 2-A, Evansville, IN 47711.

R. Craig Butler (A.B.'78) continues to work as a geologist with his father (Robert E., M.A.'54), primarily in western Kentucky. He is also taking a computer course at the U. of Ind., Evansville, "trying to keep up with our fast growing technology, and I may pursue a degree in this direction." Craig sends his best regards to the department, and says he's inspired by reading of the "enthusiastic pace of travel that you all maintain, along with lecturing, etc." For those single women who may be similarly inspired, Craig writes that there is "no knot tied yet - maintaining staunch bachelorhood!" If you'd like to try to tie and un-maintain or just say hello, Craig can be found at 6410 No. 6 School Rd., Evansville, IN 47712 when he's not roaming the green rolling hills of Kentucky.

Phillip E. Byrd (A.B.'79) finished his M.S. degree in geology at U.K., Ky., in Dec. '81 and is now working for Texaco in Houston. New address: 7320 Mullins, #726, Houston, TX 77081.

Tom (Carp) Carpenter (A.B.'74) is still with Shell Oil Co., a Senior Geologist for Rocky Mountain Exploration. He's recently "followed the footsteps of fellow geologist John Hefner (A.B.'51) and assumed the role of President of the Greater Houston Miami U. Alumni Assoc. A note to all new Houston-bound Miami geology grads - if we can be of assistance please give me a call - I'm in the book." Tom and his wife, Jessie (Leasure), '74), are still in residence at 21334 Park Mount Dr., Katy, TX 77450.

Chuck Cary (A.B.'48) transferred from Balikpapan, Indonesia to Rio de Janeiro, Brazil in Oct. '81. Lucky Chuck was appointed Director, Unionoil Offshore Exploration Co., Ltd., and Vice President and Resident Representative, Unionoil Exploracao de Petroleo, LTDA. Chuck says, "I have been around the world many times and have visited hundreds of countries but Rio has to be the most beautiful city in the world." For those of you with the cash to visit, Chuck may be found at Unionoil Exploracao de Petroleo, LTDA, Praia do Flamengo 200-17 Andor, 22210 Rio de Janeiro, BRASIL.

Michael Chaney (E. Sci.'79) sent us a teeny tiny note which reads as follows: "Degree same, position - 8th grade science teacher - Madison Local School, Middletown, Ohio." But Mike, where ARE you? Our last address is 10461 Preble Co. Line, Middletown, OH 45042. Are you enjoying life and work?

Curt Chapman (A.B.'76) is still with Texas Oil & Gas in the Gulf Coast region and working toward an M.B.A. at the U. of Houston. New address: 5326 Stillbrooke, Houston, TX 77096.

Minchen Chow (M.S.'48) is the Director of the Institute of Vertebrate Paleontology and Paleoanthropology, Chinese Academy of Sciences. Early this year he spent 3 months visiting Australia, lecturing and doing research at Monash U. in Melbourne. He took a second trip to Japan for an opening ceremony of the Chinese Dinosaur Exhibition in Tokyo and then a hasty jaunt to Paris for a UNESCO symposium in commemoration of the great French geologist and philosopher P. Teilhard de Chardin. Minchen sends his best regards and greetings to old and new Brice Hall geologists. Return greetings may be addressed to: Director, Institute of Vertebrate Paleontology and Paleoanthropology, Chinese Academy of Sciences, B.O. Box 643, Beijing (Peking), (28), People's Republic of China.

Dick Church (M.S.'50), along with his wife, Evelyn, and daughter, Jody, visited Timberline in July '81 on a five week trip to British Columbia, the trip made in a new Bronco pulling a 21 foot trailer. Dick and family have moved to Denver 'though still with Mobil.

Kelly Coates (B.S., E. Sci.'79) has finally broken his four year silence to let us know that he is teaching high school science and coaching boys' track, but unfortunately neglected to tell us what school. He is also now happily married to Jann Tiberghain, a Miami grad. of '79. Kelly writes that their current residence is a 17-acre farm, complete with barn, horse and plenty of things that need to be fixed! The address of this lovely paradise is 6855 Terrabrook Ave., S.E., Waynesburg, OH 44688.

Suzanne Danner (A.B.'81) is a grad. student at the U. of Tex. Address: 105 W. 38½ St., Apt. 106, Austin, TX 78751. Her home address has also changed to 7441 W. 7th St., Plantation, FL 33317.

Dave Delo (A.B.'26), as reported by ye editor earlier in this S.S., tramped over his old grounds in the Dubois, Wyo. area several times this past year. Dave is engrossed (as a retiree) in his innovative "private enterprise" course at Tampa Prep. He was assisting in the 50th anniversary celebration of the U. of Tampa, from which he retired as President.

Steve Dennis (A.B.'79) and Tony McAloon (A.B.'78) paid Timberline Ranch and all the second term students a visit at the K.O.A. as a stop-off during a hiking and fishing holiday at Torrey Creek. Steve is in New Orleans, Tony in Houston.

Forrest Earl (A.B.'80) reports much the same as Sara Deutscher.

Larry Edwards (A.B.'40) finally wrote to let us know what he's been doing - and what doings they are! He's working at NASA Headquarters in Washington, D.C. as Manager of Advanced Space Transportation Systems. All he told us about this job was "Rockets for outer space!" Wish he'd filled us in a bit more, but perhaps it's simply too technical to be briefly explained. An interesting sideline hobby of Larry's is inventing improved mass transit. Sounds like genius at work! We believe he and his wife, Ruth, are still at 3507 Slade Run Dr., Falls Church, VA 22042.

Mike Ehman (B.S. Min.'67) recently became President and Chief Executive Officer of Morgan Semiconductor, Inc., located at 2623 National Circle, Garland, TX 75041. As he indicated no change of home address, we presume he, wife Carol and children Heather and Matthew are happy and healthy at 3723 Buckboard Dr., Plano, TX 75074. Best of luck in your new position!

Kim Ehret (A.B.'80) is still working on her Master's in Engineering Geology with background in Hydrology at the U. of Waterloo, Ontario, Canada. Her big news this year is that she's playing Women's Varsity Basketball! Kim says it's challenging and has been keeping her busy. For team news, write to Kim at Room 306, Minota Hayey Residence, U. of Waterloo, Ontario, CANADA N2L 3G1. Happy hooping, Kim!

Peg (Svenson) Faithful (B.S., E. Sci.'71) opens her newsy card with a big "Hi, Alice!" She's a computer programmer with the National Bank of Alaska and says she continues to enjoy the state. Peg extends an invitation to any old classmates and/or professors who may be passing through Anchorage to stop and say hi. Her favorite hobby now is singing with the Sweet Adelines, an international women's group singing 4-part barbershop harmony. Finally, Peg sends her congrats to Dr. Baldwin and a warm hello to all others. Address: 3101 Brookside, Anchorage, AK 99503.

Shawn Fell (B.S., E. Sci. Ed.'79): "After leaving school in May of '80, I took the summer off and traveled through New England by bicycle. I returned to Lima and substitute taught until Feb. and then went camping and hiking through the southwestern U.S. After reaching San Diego I went to Honolulu

to spend a few months. I fell in love with Hawaii and decided to stay. I taught summer school and then found a teaching job for the fall. Not much opportunity for geology here." What about vulcanology?

Kenneth Fetzer (M.S.'54) is still working as a petroleum geologist in the south Texas area but for a new company. Address: MidCoastal Exploration, 111 Guaranty Bank Plaza, Corpus Christi, TX 78475.

Jeff Floyd (A.B.'80) and Steve Sommer (A.B.'78) visited Dr. Reinhart in Nov. '81 and report that they are now roomies at 6229A N.W. 63rd St., Oklahoma City, OK 73132.

Bob Frank (A.B.'79) is presently working part-time on his Master's in Geologic Engineering at the Colorado School of Mines and working full time at C & K Petroleum in Denver as a geological engineer. When all the prerequisites for the M.S. are finished he'll make the big switch and work only part-time while carrying a full load at Mines. Best of luck to you! The combination of work and school is not an easy one. New address: 12265 W. 71st Pl., Arvada, CO 80004.

Tom Galya (Ph.D. 'ex) is not only a doctoral candidate, he has taken a position as a Senior Coal Geologist with Exxon Coal Resources in Houston, TX. Tom hopes to finish the dissertation for an early Fall Semester ('82) defense, and reports that he and wife Lanora are slowly getting "Houstonized." Address: 6601 Dunlap, Apt. 2044, Houston, TX 77074.

Clayton (M.S.'77, Ph.D.'80) and Cathie (Stumpenhous, M.S.'76) Gardinier wrote in Aug. '81 to let us know they'd be moving to Auburn, Alabama in Sept. Clay is now an Ass't. Prof. at Auburn U. following a year's teaching at G.S.U.; Cathie has been working at the Georgia Geol. Surv. as a Senior Geologist for the last year. But the really big news was the last line of the card: "Expecting first child in December." Since then we've heard nary a word, so c'mon Clay and Cath, was it him or her? Alabama address: 512 Dumas, Auburn, AL 36830.

David Giles (M.S.'63) is another of those fellows that we've not heard from in some time, but from the looks of things he's been pretty busy. Dave has embarked on a new business venture, described as follows in a promotional letter he sent to us: "CIMARRON EXPLORATION, INC. is an independent Denver-based minerals consulting firm specializing in domestic and international base and precious metal exploration, project evaluation and appraisal, applied ore deposit research, and exploration target development at the commodity, country, project and prospect levels. ...A major thrust is to provide clients with a skilled and mobile task team over the short term in response to specific exploration project-program requirements, or problem situations. ...Services are available on a consulting or contract basis to industry, federal and state agencies, and investment houses. Past and present clients of the principals include: Utah International, Pennaroya, United Nations, ASARCO, Mapco Minerals, Freeport Exploration, Felmont Oil, and Canyon Resources." Sounds impressive enough to be an immediate success. Good luck! Address of the company: 445 Union Blvd., Suite 209, Lakewood, CO 80228. Dave, his wife, Judy, and children Stuart Alan and Ashley Diane also have a new address: 3880 Mossy Rock Lane, Evergreen, CO 80439.

Bruce Gillespie (B.S., E. Sci. Ed.'78) is still working at the Garden of the Gods Park, Colorado Springs, but has a new position as White House Manager. He is presently working with an Interpreter "Team" to improve the environmental programming in the Garden. His newest skill is blacksmithing, and he's

still playing guitar, running and SKIING! Bruce sends a special thanks to those who so well prepared him at Miami U. Address: 425 E. Fountain Pl., Manitou Springs, CO 80829.

Anton Gombach (M.S. 'ex '64-66) dropped in unexpectedly in July with his lovely wife, Judy, and daughters, Andrea and Michelle. He is now General Manager at Champion Welding Products, 4010 E. 116th St., Cleveland, OH 44105. It was great to see you and yours, Anton, please keep in touch.

Serge Gonzales (M.S.'60) left the U. of Georgia in Jan. to devote his time fully to consulting (Earth Resource Associates, Inc.) and related geologic business activities. He helped write the AIPG position paper on hazardous waste disposal and geology, co-authored a paper on a worldwide radioactive waste disposal program, attended the G.S.A. convention in Cincinnati in '81, and anticipates writing an article in early '82 in American Scientist (Sigma Xi) on radioactive waste geology. His wife, Dallas, has become Administrative Coordinator/Undergraduate Adviser for the Dept. of Marketing at the U. of Georgia, and his son, Mark, is still attending N. Tex. S.U. Thanks, "Pancho" (I'll use it, too), for the kind words.

Don Hall (A.B.'74) from whom we have NEVER received a card, finally let us know he's still alive. Don married Michelle Hill in '74, and their son, Christopher Michael, was born in Oct. '79. Don has been teaching Earth Science, Chemistry and Computer Science at Bayshore High School in Bradenton, Florida for the last 6 years. He finished his M.Ed. in Earth Sci. Ed. in '80 at the U. of S. Fl. and is currently working on his Ph.D. in Science Ed. at Florida Inst. of Tech., specializing in Earth and Space Sciences and Computer Education. Don writes that the beaches are nice but he and Michelle miss the change of seasons and plan to move back north, and hopefully west. We hope there son't be such a time lapse before we hear from them again! Address: 2924 36th Ave. W., Bradenton, FL 33505.

Helen Hay (M.S.'75, Ph.D.'81) was the third person to contribute a paper to the Hueston Woods Symposium in April here in Oxford.

Gary Heinemeyer (A.B.'70) thanked us for reporting him "not missing" and said, "it is good to be 'found' and among the living." Amazing Grace, how sweet the sound...

Bill Helland (A.B.'80) was the subject of a letter sent to the Dept. by Judith Oing of Dresser Atlas. Bill is part of a new "cased-hole" specialty team, and was singled out from many to apply his wireline expertise to their specialty service. Among Judith's comments: "Individual achievement and resourcefulness are encouraged here at Dresser Atlas and we like to acknowledge such performances whenever possible. We are proud of the accomplishments of our technical staff...". Congratulations, Bill! Are you still at 8721 Blankenship Dr., Houston, TX 77080?

Lloyd "Al" Hershey (A.B.'55) sent your editor a "pretty picture card" of the Sultanate of Oman, where he has been since May '81 test drilling for H₂O in the JEBEL QARA mountains. Bette and he planned on a summer Stateside trip but we haven't seen them in Oxford yet. One can write to the couple at Box 18870, Salalah, Sultanate of Oman.

Greg Hinterlong (M.S.'81) has a Cities Service job in Oklahoma and likes it quite well. He, wife Suzanne and twins Katie Danielle and Matthew David have "a very nice 2-bedroom apartment across from Oral Roberts University" and find the people in Tulsa very friendly and helpful. New address: 8253A South Yorktown Court, Tulsa, OK 74136, phone # (918) 299-3244.

Randy Hyde (A.B.'81 GLG & GEO) moved to Colorado and after playing in the mountains for awhile began working at TGA (a small company, 11 geologists and 7 cartographers; each responsible for a section of each project) doing photographic mapping. Randy loves the mountains and says he's now getting his thrills skiing in bottomless powder. He extends an invitation to anyone traveling to the Denver area to drop in for a visit. The work address of the "great tour guide" is: Consulting Geologist, Photogeology-Geomorphology, TGA, 4100 Dry Creek Rd., Littleton, CO 80122.

Karen Johnson (A.B.'79) is writing her Master's thesis (Remote Sensing/Geology) at the U. of Mich. and working full time as a Research Scientist at the Environmental Research Institute of Michigan (ERIM). This busy lady can be reached at home at 3548 Green Brier, Apt. 460-C, Ann Arbor, MI 48105.

Ken Krivanek (B.S.'72) is still plugging away on his thesis 'way out west and he insists that he and his wife, Sandee, miss Ohio and wish for the chance to visit Oxford.

Dick Lemon (A.B.'61) writes that he's now divorced but still resides at 915 E. Hampton, Tucson, AZ 85719. He "went fishing in Montana again last summer ('81). On the way back to Tucson my two children and I stopped in at the field station in Dubois where the second session was just getting under way. The three of us enjoyed very much chatting with Dr. Limper whom I had not seen since probably 1960. Unfortunately, Dr. Martin was out fishing so I was unable to say hello to him. Just in case Dr. Limper forgot: 'Hi, Dr. Martin'."

Leo Lightner (A.B.'57) had, as far as we knew, disappeared off the face of the earth. So we were understandably startled when his wife, Charlotte, materialized in the office the other day. Leo is with Ferro Corp., 4150 E. 56th St., Cleveland 5, OH 44105, and is employed as Chief Statistician in the Technical Center. For leisure recreation he sails a mirror dinghy, and was the 1976 National Champion. Leo, Charlotte, daughter Brenda Kay (born 20 Jan. '64) and son David Eric (born 23 April '67) reside at 3286 W. 157th St., Cleveland, OH 44111. Now that we know they're alive and will be receiving the newsletter, perhaps we'll have more news next time! Your ed. enjoyed his visit with Charlotte and the young ones.

Jeff Lyon (M.S.'75) has transferred to Oklahoma City from Columbus, OH and is still working as a staff geologist for Mitchell Energy Corp. In Columbus he worked with Herb Magley (B.S.'70) and saw a lot of Katie (Shafer, 'ex '75-77) and Doug Crowell (M.S.'77) from whom we haven't heard since 1979. He also occasionally still hears from Dave Scanlon (M.S.'75) and Stan Paxton (M.S.'80). Jeff and his wife, Cindy (Tranter, M.U. grad.), just had their second son, Ryan Michael, on 7 July '81. However, we've never heard about the first one! So please let us know all about your first child, Jeff, as well as your Oklahoma address.

Herb Magley (B.S.'70) was also transferred by Mitchell Energy Corp. from Houston to Columbus (where he worked with Jeff Lyon, remember?) - just after he'd forgotten what snow was! The move and promotion to Exploration Manager - E.U.S. was effective 1 Nov. '81, and Herb's business address is Mitchell Energy Corp., 6480 Busch Blvd., Suite 400, Columbus, OH 43229. Let us know your home address, Herb.

Tom Maher (M.S.'81) is now a geologist with Texaco U.S.A., exploring for oil and gas deposits in central and southern Okla. He is also trying to get a paper published in Nature with Dr. Grant and Bob Lepak, dealing with Precambrian rocks in the Adirondack Mountains. Tom writes that former Miamians

at Texaco include: Pete Duggan (M.S.'74), Kim Moore (M.S.'77), Ron Riley (A.B.'75) and Rene Davis. The big news is that he's planning on marrying Maria Smart, a former grad. student in Architecture at M.U., in the summer of '82! We don't have a home address for Tom, but those interested in the particulars concerning the wedding may write to Tom at Texaco U.S.A., P.O. Box 2420, Tulsa, OK 74136.

Linda (Hudson) Martin (A.B.'75) is still teaching high school Earth Science, but her duties have expanded considerably! Linda is now Science Club co-adv., Science Fair co-coordinator, and on the Unified Science Advisory Group for Central Ohio at Capital U. In her spare time, she and her husband, Jerry, spent 3 weeks in Phoenix, Arizona, with side trips to N. Rim - Grand Canyon, Zion Nat'l. Park, Las Vegas and Tucson. She also discovered that "mineral collecting in the desert in June when it's 115°F is not too smart - I lasted all of 45 minutes." She and Jerry are building on to their lovely home with skylights at 6565 Mayfair Dr., Galena, OH 43021.

Joseph Mauch (A.B.'80) was the featured speaker at the West Texas Geol. Soc. meeting on 27 July '82. The title of his talk was the "Late Paleozoic Tectono-sedimentary History of the Marfa Basin, West Texas," a result of his studies in Presidio and Brewster counties, TX.

Bob Maurer (M.S.'74) became Geological Manager and part owner of Entrust Exploration in July '81. The company consists of four professionals, including Bob, a landman, an engineer and a businessman. They hope to both screen and generate prospects for promotion to investors. Bob says that even though he and his family just received their Texas citizenship papers (7 years residency requirement in the Lone Star State!) that their Yankee ties are still very strong. Bob, his wife, Sandra, and their children, Kristin and Robert, live at 3515 Kennonview Dr., Houston, TX 77068.

Tom Meaney (A.B.'78) moved to Houston upon graduation as part of the "Mini Shideler Contingency" meeting with Steve Dennis (now in New Orleans), Bill Harris, Dean Glazier and Tony McAloon. He worked two years at Seiscom Delta, a geophysical contract company, processing seismic data. After two years his tolerance level had dropped to a low due to the Houston lifestyle, and he moved to Denver where he is now a Processing Geophysicist for Champlin Petroleum's Pacific Div., 2101 S. Monroe, Denver, CO 80210. In answer to your inquiry as to the whereabouts of Tom Brown and Jackie Fritz, the last addresses we have on file for them are as follows: Tom - 6333 College Grove Way, San Diego, CA 92115; Jackie - 441 Wyola Rd., Santa Barbara, CA 93105.

David Miller (A.B.'79) is a geologist for GX Consultants of Denver. He moved from Houston to Denver in Jan. '81 where he was transferred to the Rocky Mountain Core Analysis Laboratory of Continental Laboratories, Inc. He then went to wellsite consulting in Aug. Dave was also kind enough to send us the new address of Clay Roberson (A.B.'79), who also works for GX Consultants: 1419 Coffman, #3, Longmont, CO 80501. Dave is living at 1400 Madison St., Denver, CO 80206. We appreciate your help in keeping our alumni addresses up to date, Dave.

Philip Molling (M.S.'79) is working for Molycorp and was transferred to the Questa Molybdenum Mine in New Mexico in March '82. We have no address in New Mexico, but the letterhead on Phil's last letter bore the following address: Molycorp, Inc., Domestic Exploration Dept., 94 Iverness Terrace East, Suite 200, Englewood, CO 80112.

David L. Morrow (M.S.'49) was only in the United States for a month last year to move from Denver to Dallas. He's been traveling (working) in Libya, the Camerouns, Trinidad and the B.V.I. He's hunted in Africa twice, the last time in July, and visited the company's offices in Singapore, Cairo, Jakarta, etc. His new work address is: c/o MEPSI, P.O.B. #900, Dallas, TX 75221.

Brian Murphy (A.B.'77 GLG & GEO) is an Ore Control Geologist for Brewster Phosphates in Bradley, Florida. Address: 1475 Woodlake Dr., #168, Lakeland, FL 33803.

Bruce Netzler (A.B.'77) is working as a geologist in the Oil & Gas/Subsurface section of the Missouri Geol. Surv. in Rolla. His wife, Roxane, is teaching at the Fort Leonard Wood extension of Drury College. Both, having completed their master's degrees in late '81, are happily at home at 1520 McCutchen, #10, Rolla, MO 65401.

Dave (A.B.'74) and Sheila (M.U.'80) Nielsen dropped in for a short visit at Timberline in July '81 while on a whirlwind Rocky Mountain trip from their home in Columbus, OH.

Bill Peters (A.B.'42) retired from his Professorship at the College of Mines at the U. of Az. in May '82. He is now a Senior Associate with BEHRE DOLBEAR of New York at their Tucson office, 6420 East Broadway, Suite A102, Tucson, AZ 85710. He also hopes to get started, between consulting jobs, on the 2nd edition of his text "Mining and Exploration Geology" for John Wiley. His wife, Lane, hopes there will be more time for travel! Their home address remains the same - 5702 E. 7th St., Tucson AZ 85711. Our thanks to Lane and Bill for the class of '42 pic seen in this issue.

Jeff Porter (A.B.'79) is now a Sales Manager for Ragsdale Well Logging Co. in Houston, TX, and lives at 781 Country Place Dr., #2077, Houston, TX 77079.

Bob Radabaugh (A.B.'35 and faculty c. late '30's) and his wife, Betty, trekked up to Oxford, post G.S.A. meetings, and gave Limper the opportunity to show them around a changed campus and reminisce over lunch. The Radabaughs are near neighbors of the Bill Peters at 5720 E. 9th St., Tucson, AZ 85711.

Clay Roberson (A.B.'79), now a geologist with GX Consultants (geoscience extension of XCO), paid us a visit last fall. His business address, for those who don't know of his move from Casper, WY, is now 910 16th St., #522, Denver, CO 80202.

Marvin (Nicky) Saines (M.S.'66) left his 9-year position at Harza Engineering Co. of Chicago in the fall of '80 to go with Woodward-Clyde Consultants, also in Chicago. However, it appears Nicky won't be in the Windy City for too long as he's accepted a long-term overseas assignment with Tetra & Tech Int. of Arlington, VA in Oman (Arabia). He'll be working there on ground-water exploration and development. Will you still be keeping your apartment in Chicago? Or do you plan to acquire a harem and stay for awhile? Nicky, you might check on Al Hershey who's plugging the Earth for the H₂O near SALALAH. You might tip a glass (of water, that is) for old M.U. What do we do for a mailing address?

Tom Sale (A.B.'80 GLG & CHM) has been working for the past year and a half for Engineering Enterprises, Inc., a groundwater consulting firm in Norman, OK. The bulk of the work involves design and construction of systems which recover petroleum products that have leaked out of pipe lines and tanks in

refineries. He has also been responsible for the design and construction of two monitoring systems at hazardous waste disposal facilities, and has had the opportunity to write three reports and a number of proposals. Speaking of proposals, Tom has popped the question to Janice Weithhoff (A.B.'81) but has not yet revealed any of the details of the upcoming marriage. Tom's current address is 732 S. Lahoma, Apt. 3, Norman, OK 73069. In addition, Tom, if you're still in Okla. when you read this be sure to tip your hat as you pass 715 S. Lahoma; that's where Limper met his bride some years ago.

Nancy (Fischer) Scott (A.B.'77) sent us her annual delightful note which reads: "New address: 13136 Rosser Rd., Farmers Branch, TX 75234. Yes, Ben and I are now the proud owners of a bouncing baby house. I even used a Dallas county geologic map to make sure we weren't buying a house on the expanding Eagle Ford shale that is the bane of many Dallas homeowners. The house even has something that resembles a yard. Housewarming presents are welcome, encouraged and even solicited. Meanwhile the job's going great. I'm still pleased with my decision to work for Mobil in spite of the fact that Mobil has publicly humiliated itself with its attempts (or rather its failures) to scarf up Conoco and Marathon. Watch out Exxon - here we come!"

Bob Spoley (M.A.'66) may well have puffed up an ego or two around here with the following: "Having fought the structural problems in the oil business for 15 years, I still find the basics of structural geology I learned at Miami about the most important thing I use in finding O & G. Thanks for a job well done." And thank YOU, Bob. We all need those pats on the back, and somewhat higher than shod pats (kicks) come. This time we'll list both of the younger Spoleys, Eric Edward, 8+, and John Richard, 4+ years old.

Bob Stewart (A.B.'43) has "been doing all the things I wanted to do since I retired. Have worked on geothermal project, petroleum exploration project, published a new geological map of the Panama Canal and vicinity, Republic of Panama. This was with Dr. Woodrime and my wife, Joy. Am now working on the geology of the proposed foundation for a new suspension bridge over the Panama Canal - the Pirento Simon Bolivar. Construction begins Jan. '82." New address: PSC, Box 2138, APO, Miami, FL 34002.

Jim Stinnett (Ph.D.'80), a Geochemist for Mobil Research and Development, Dallas, TX, was just recently promoted to the position of Geochemistry Group Manager. Congratulations! Jim, his wife, Glee, and daughter, Lisa (now 4), are living at 2917 Fountain Head Dr., Plano, TX 75023.

"Rocky" St. John (A.B.'56) celebrated the 3rd anniversary of his own accounting firm, Richard A. St. John, Inc., DBA, on 1 Oct. '81. The firm has expanded 6 times since its inception; the latest move in July '81 took them to 3520 Galley Rd., STE 201, Colorado Springs, CO 80909. With a track record like that, Rocky should receive plenty of replies to his query: "Can we help any alumni in their accounting, bookkeeping or tax needs?" (We have his phone number available in trade for a contribution to the Shideler fund).

Eral "Reese" Sutton (M.A.'54) "returned to Dubois, WY this summer, swam in the geyser, caught a couple of trout that I donated to Dr. Limper and talked to the students about camp (they don't have to go all the way into town for a beer, the KOA is handy). The kids had the same complaint about camp that I did 28 years ago and that was "They couldn't keep up with Doc Limper." Sorry I missed seeing Docs Limper and Martin. We are still getting about 8-10 of the "old" 1950-56 grads together here in Houston." Address: 1700 Mistletoe, Kingwood, TX 77339. Reese, you could really develop a whopping crowd by including some of the "youngsters" of M.U. in your meetings. Those trout were "real good."

Ned Timbel (M.S.'78) is a geologist with Buckhorn Petroleum in Denver and is involved in Wyoming exploration. Address: 6470 E. Long Circle N., Englewood, CO 80112. Ned sends his best wishes to his friends at Miami.

Jim Tinsley (A.B.'71) spent 7 years as a U.S. Navy deep-sea diving officer, and after becoming a civilian again was logistics manager for an Alcoa Sea Probe vessel, taking core samples off the Brazilian coast. He is presently working on sonar instrumentation programs at Gould Defense Systems Div., where he is Operations Manager. Jim also informed us that he is married to Connie (Klees, '71), and they have a son, Jimmy, 6. The family resides at 1003 Lakeview Lane, Annapolis, MD 21401. Don't wait another decade before writing again, Jim!

Dale R. (Dick) Thompson (M.S.'63) sent your ed. a long, newsy letter last fall recounting his visits with M.U. alums - the Bernie Bakers, Dave Bayhas, Jack Cunninghams, Swede Lindforses, Dick Passero, and Ray Robisons. One surprise was when daughter Sally's field hockey team played Miami, and on the team was Wayne Martin's daughter, Ann, with whom they had a long talk. Daughter Elaine graduated from college last year. Your editor, on returning to Oxford, was greeted by an impressive Thompson family stitchery commemorating "the Limpers' 42 years of service to M.U." Many many thanks.

Mark Thomsen (M.S.'80) sent us a "quick note" (2 pages!) to let us know what he's been up to at Mobil. His group drilled 3 wildcat wells offshore Tampa Bay, FL and another off Pensacola, FL. The first two were Cretaceous tests searching for carbonate buildups in the Sunniland limestone. The third was a deep (24,000') Jurassic test. Between the offshore assignments, Mobil has kept Mark very busy with 3 training schools and 2 field trips. Mark closes his letter to Dr. Martin with "I find that the courses and instruction I received at Miami have prepared me well for my work at Mobil (especially all those talks we gave in your classes - that's a very important part of the job here)." So current grad. students, take heart! All that hard work does pay off eventually. Thanks for the letter, Mark, keep in touch.

Dirk Van Hart (M.S.'67), after being an independent geologist in Okla. City since Apr. '78, moved to Bakersfield, CA on 1 Jan. '82. He will be working there with Occidental Petroleum in their Latin American Div. and plans to move to South America in a year or so. Congratulations and good luck, Dirk! Address: Occidental Petroleum - Latin America, 5000 Stockdale Highway, Bakersfield, CA 93309.

David "Froni" Vicarel (A.B.'81) started grad. school at the O.S.U. and is still in search of the elusive thesis topic. Although undecided, he may "try to disprove Hutton's Theory of Uniformitarianism, he may have been wrong, you know!" Good luck searching, Vic. Address: 613 Galli Ct., Columbus, OH 43210.

Richard Wagner (M.S.'74) has initiated an oil and gas exploration company called "Petroleum Interests, Inc." and is working hard, drilling four wells. His real estate business is also going well. Suresh Sachdev (Ph.D.'74) moved to Houston and had Thanksgiving dinner with Richard and his wife, Beverly (Davison); then the Wagners were off to ski in Aspen before flying home to Florida for Christmas. Richard sends a Special Hello to Dr. Stewart and a Happy Holidays to everyone.

Becky Watson (A.B.'78) is working for Arco Exploration in Denver with the Great Basins Group. Her new address: 7100 E. Mississippi Ave., #10-201, Denver, CO 80222.

Emily L. (Landis) Wegert (A.B.'79) reports a horrendous oversight on our part - she received no Shibboleth last year after sending in a card. We trust the S.S. will arrive and that the thesis at the U. of Toledo was defended successfully. Her plan, after the Master's degree, is to join her husband (James, M.U.'77) at: Dunbar Apts. 8E, Coleman Ave., Asheville, N.C. 28801 and find a position in mineralogy. We'll look forward to all the good news on the next card, Em.

Sarah "Sally" Welshofer (B.S., E.Sci.'76) is teaching Science at Middletown H.S. after 5 years in the middle school level. Her husband, Lewis, is a part time instructor at Miami's Middletown campus, oldest daughter, Lisa, earned her Art degree from M.U. in '78, son, Lew Jr., is a sophomore at Miami in A & S, son, John, is a senior in high school and wants to pursue engineering (not at Miami), and youngest daughter, Gretchen, is a freshman in high school. The family resides at 3004 Sherman, Middletown, OH 45042. Thanks for the news, Sally, and glad you're pleased to read the Shibboleth.

ADDRESS CHANGES

Mark A. Creel (M.S. 'ex '80-82): 110 Mark Twain Dr., Apt. 26, River Ridge, LA 70123.

Jeffrey Galleher (A.B.'74): 4204 Storm Ave., #1, Yakima, WA 98908.

Adrian M. John (B.S., E. Sci. Ed. '66): 419 Orchard St., Niles, OH 44446.

Karen Newdale (M.S.'80): 3432 S. Akron, #33, Denver, CO 80231.

David P. Olson (M.S.'82): P.O. Box 56174, New Orleans, LA 70156.

Robert Renken (M.S.'76): 1994 Poplar Ridge Dr., Lawrenceville, GA 30245.

OOPS!

Mark W. Frye (A.B.'76) mailed in his card but we "goofed" and it was misplaced 'til now. From the card, let's see if we can reconstruct events in time sequence:

- 1) Jean Nyquist (B.S. Mich.'79-M.S. Stanford'81) and Mark were married in Midland, Mich. prior to Oct. '81, a wedding witnessed by Dave Smith (A.B.'76) and Stu Kelly (A.B.'76), among many others.
- 2) Amoco Prod. Co., Denver, saw fit to promote Mark to Petroleum Geologist. His boss is Gordon Henderson (B.S.'57).
- 3) The newlyweds purchased their first house at 5911 W. 68th Ave., Arvada, CO 80003. Handyman activities keep Mark out of mischief.
- 4) Mark's studies on carbonate mounds are now centered on Miss. rocks in E. Colo. Nautiloids are not forgotten, however.
- 5) An '82 issue of the Jour. of Paleo. will have a paper by Mark. Look for it, y'all.

* * * * *

BONERS

"One student reported finding a septagenarian nodule." --It's good after ten years of sexagenarianism.

"The Earth makes one resolution every year." --Especially on New Year's Day.

"The rocks of the Bighorn Dolostone lie uncomfortably upon the Gallatin beds." --A waterbed would be softer.

CONTRIBUTORS TO THE SHIDELER FUND

July 1, 1981 through July 1, 1982

This list has been graciously supplied to us by the Alumni Foundation. We hope it is complete and correct, but we do need to know of any inaccuracies.

We'd most certainly be delighted to see this list increased ten-fold. Remember, any contribution to the Miami Foundation, no matter of what amount, can be earmarked partially, or completely, for the W.H. Shideler Memorial Fund. The monies find excellent use by the department, its programs, its equipment and its students.

- Mr. & Mrs. Bruce H. Baker (Bruce, A.B.'57, M.S.'63 & Gale)
- Mr. & Mrs. Robert E. Behling (Robert, M.S.'65 & Mary)
- Mr. Nicholas Beskid (M.S.'71)
- Mr. & Mrs. William F. Bishop (William, A.B.'54, M.S.'57 & Julia, A.B.'58)
- Mr. & Mrs. Richard L. Boone (Richard, A.B.'79 & Jeanne, A.B.'79)
- Mr. Benjamin R. Brace (M.S.'68)
- Mr. Martin L. Bretz (A.B.'78)
- Mr. Glen A. Brown (A.B.'65)
- Mr. & Mrs. Michael S. Chappars (Michael, A.B.'25, M.S.'30 & Marie)
- Mr. & Mrs. James A. Coyle (Leslie (Parkerson), A.B.'77)
- Mr. & Mrs. John B. Curtis (John, A.B.'70, M.S.'72 & Barbara)
- Mr. David M. Delo (A.B.'26)
- Mr. & Mrs. Michael F. Ehman (Michael, B.S.'67 & Carol)
- Ms. Kimberly S. Ehret (A.B.'80)
- Ms. Peg (Svenson) Faithful (B.S. E. Sci.'71)
- Mr. Mark W. Frye (A.B.'76)
- Ms. Jane (Curtis) Granger (A.B.'52)
- Mr. & Mrs. Gregory C. Hatch (Gregory, A.B.'55, M.S.'56 & Carol)
- Mr. Gordon L. Heele (A.B.'61, M.A.'63)
- Mr. & Mrs. Karl E. Limper (Karl & Betty - Faculty)
- Mr. W.R. McDaniel (A.B.'56, M.S.'57)
- Mr. & Mrs. David F. Parr (David, M.S.'75 & Diane)
- Mr. Antone P. Pathe (A.B.'51)
- Mr. & Mrs. Edward M. Roberts (Edward, A.B.'39 & Genevieve)
- Mr. Peter B. Selover (A.B.'55)
- Shell Oil Company
- Mr. Charles H. Soule (A.B.'72)
- Mr. & Mrs. George W. Spohn (George, A.B.'38 & Ursula)
- Mr. Thomas E. Stephenson (A.B.'44)
- Mr. & Mrs. Craig W. Stichtenoth (Craig, A.B.'75 & Bev)
- Mr. & Mrs. Eral M. Sutton (Eral, A.B.'53, M.A.'54 & Carol)
- Ms. Avetta Hoffman Trigg (Class of '28)
- Mr. James R. White (A.B.'50, M.A.'51)
- Ms. Kathleen L. (Gardner) Wissinger (A.B.'78)

Now that you've read the whole volume, your editor would appreciate comments - pro or con - on the changes in certain aspects of the S.S. format. Let's hear your thoughts.

LISA A. KRIST, the department's most able assistant, is concluding her secretarial stint with the final draft of this issue. Muchas gracias, senorita.



